



Special Offers



Lighting Catalogue

2020





www.1-light.eu

Please note:

Prices are subject to change without notification. ONE Light may change product specifications without notifying customers. ONE Light does not accept any responsibility for mistakes in this catalogue, we strongly advise customers to contact us to confirm specifications. Fitting sizes in catalogue may vary from actual fitting dimensions. Always check the actual fitting before cutting holes. All free items must be purchased together with combo items. ONE Light may discontinue any item from this catalogue without prior notice. No images or information may be copied or reproduced without written permission from ONE Light.

01 | Recessed Spots Fixed

pages 8-9



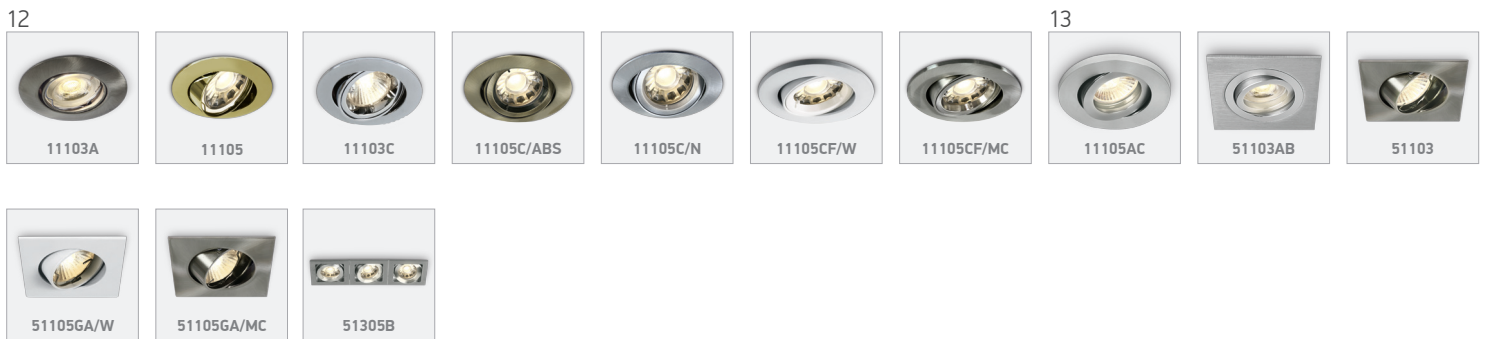
02 | Recessed Spots Fixed LED

page 10-11



03 | Recessed Spots Adjustable

pages 12-13



04 | Recessed Spots Adjustable LED

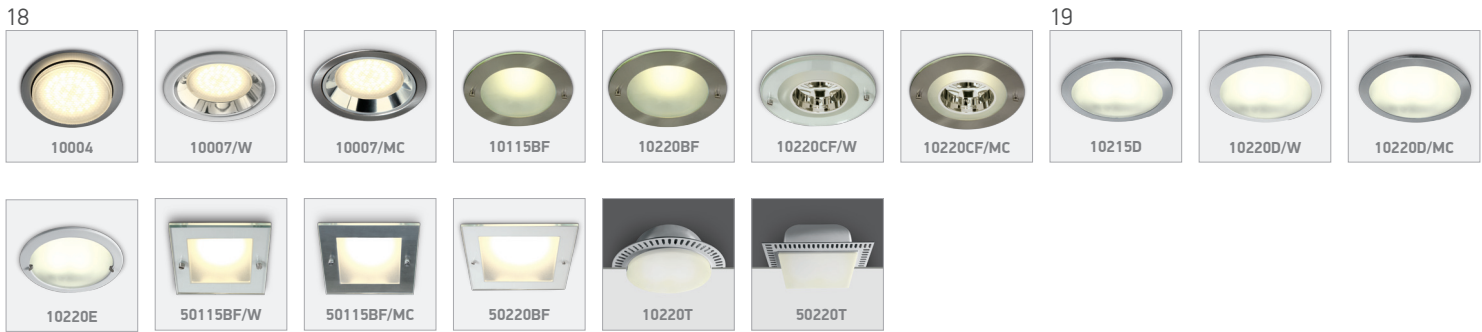
pages 14-17





05 | Downlights Fixed

pages 18-19



06 | Downlights Fixed LED

page 20-24



07 | Downlights Adjustable

pages 25-26

25



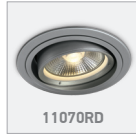
11110AB



11110U



51110



11070RD



11110H

26



11070R



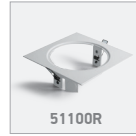
11110R



11106R



11100R



51100R



51200AR



51200R



51300AR



51300R



51400R



51400AR



51401R

08 | Downlights Adjustable LED

page 27-28

27



11109L



11112L../15



11112L../35



11118L



11106LB



11113V



11126V

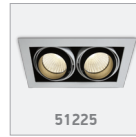
28



11138/W../



11138/G/C



51225



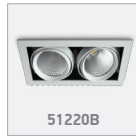
11118TR



51120/W/W



51120/G../



51220B



11130B



11135L

09 | LED Strips & Profiles

page 29-30

29



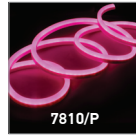
7820AW



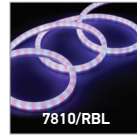
7835AW



7810/R



7810/P



7810/RBL



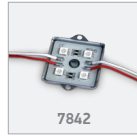
7818



7916A



7840



7842



38207L



38215L



38230L



38001A



38002A



38005A



38006A, 38006B,
38006C



38007A, 38007B,
38007C

30

10 | Track Spots

pages 31-34

31



65620T



65620T2



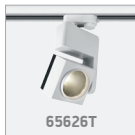
65622T



65624T



65618T



65626T

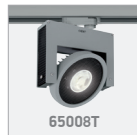


65630T

32



65608T



65008T

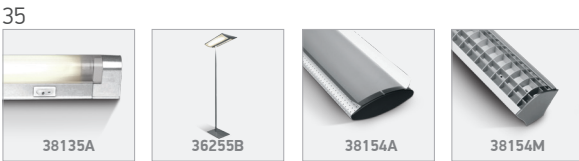


65611T



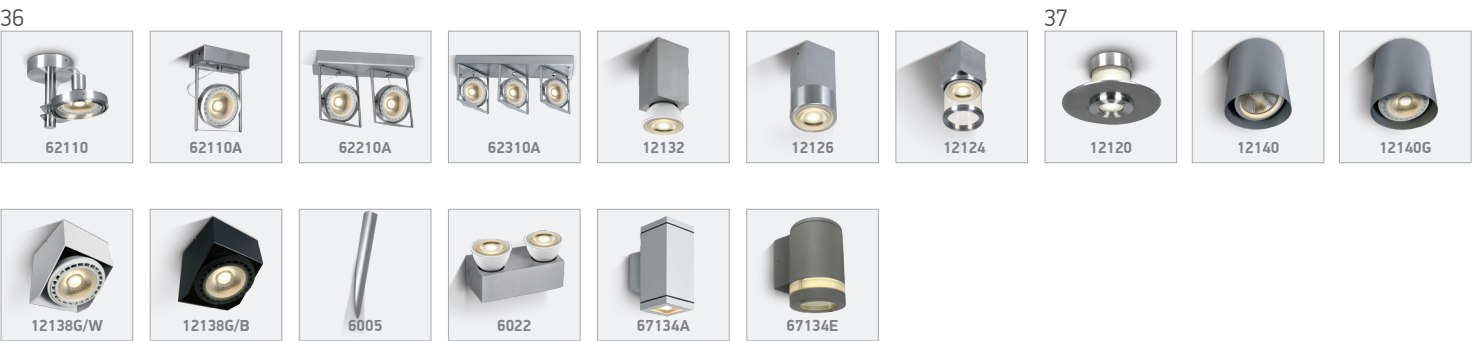
11 | Office & Kitchen

page 35



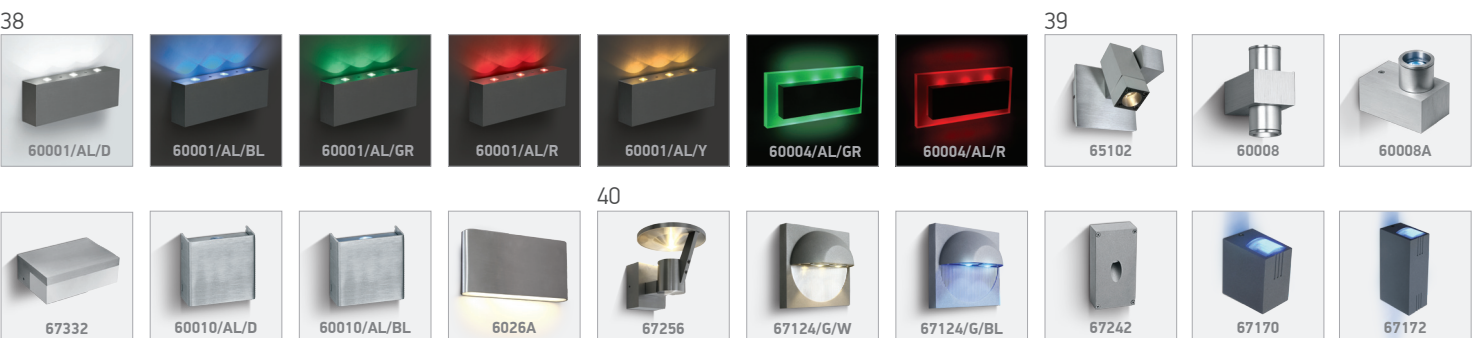
12 | Wall & Ceiling

page 36-37



13 | Wall & Ceiling LED

pages 38-41



41



14 | Plafo / Bathroom & Mirror

page 42-43

42



43

15 | Pendants

page 44

44



16 | Decorative

page 45

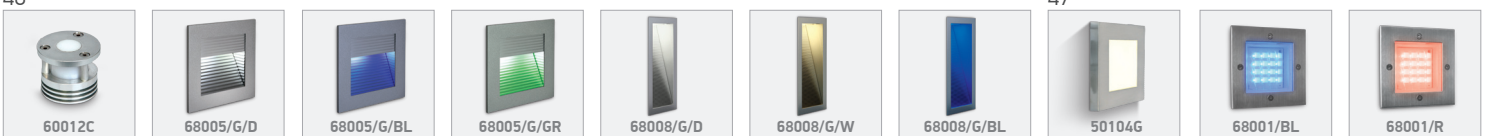
45



17 | Wall Recessed & Inground

pages 46-47

46



47



18 | Garden

pages 48



19 | Industrial & Floodlights / LED Drivers & Controllers

pages 49-51



20 | Lamps

pages 52-58



55



56



57



21 | Accessories

page 58

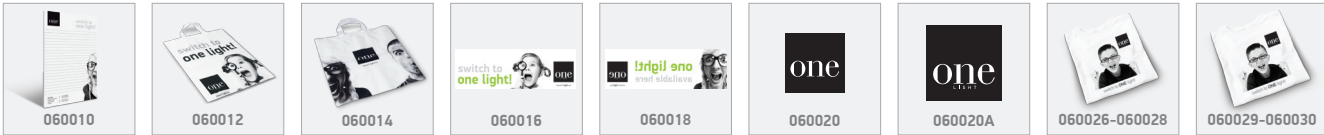
58



22 | Marketing & Advertising

page 59

59



Dark Light



DARK LIGHT
IP20
offer

10110T

10110T/W White

E-A⁺⁺

Cat. page: 13
Lamp type: 75W | R111 | G53
Description: Semi Trimless Round



IP20
offer



10102

10102/MC Brushed chrome

E-A⁺⁺

Cat. page: 03
Lamp type: 20W | G4
Description: Recessed Star Lights



IP20
offer



10102

10102/BS Brass

E-A⁺⁺

Cat. page: 03
Lamp type: 20W | G4
Description: Recessed Star Lights



IP20
offer



10103

10103/BS Brass
10103/BBS Brushed brass

E-A⁺⁺

Cat. page: 05
Lamp type: 35W | MR11 | GU4
Description: Recessed Spots Fixed



DARK LIGHT
IP43
offer



10105CJ

10105CJ/MC/5 Brushed chrome

E-A⁺⁺

Cat. page: 25
Lamp type: 50W | MR16 | GU5,3
Description: Recessed Spots Fixed



DARK LIGHT
IP43
offer



10105CJ

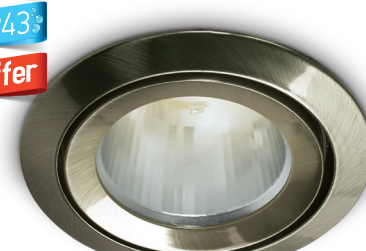
10105CJ/BS/5 Brass

E-A⁺⁺

Cat. page: 25
Lamp type: 50W | MR16 | GU5,3
Description: Recessed Spots Fixed



DARK LIGHT
IP43
offer



10105CJ

10105CJ/ABS/5 Antique brass

E-A⁺⁺

Cat. page: 25
Lamp type: 50W | MR16 | GU5,3
Description: Recessed Spots Fixed



IP20
offer



10105GL2
10105GL2/AL Natural Aluminium

E-A⁺⁺
Cat. page: 29
Lamp type: 50W | MR16 | GU5,3
Description: Round Decorative Spots

5 YEAR

DARK LIGHT
IP20
offer




10105AL
10105AL/B Black

E-A⁺⁺
Lamp type: 50W | MR16 | GU5,3
Description: Dark Light Range

5 YEAR

IP44
offer



10105Q
10105Q/MC Brushed chrome

E-A⁺⁺
Lamp type: 50W | MR16 | GU5,3
Description: Recessed Spots Fixed

5 YEAR

DARK LIGHT
IP20
offer



10105T
10105T/BE Beige

E-A⁺⁺
Cat. page: 11
Lamp type: 50W | MR16 | GU5,3
Description: Recessed Spots Fixed

5 YEAR

DARK LIGHT
IP20
offer




50105T
50105T/BE Beige

E-A⁺⁺
Cat. page: 11
Lamp type: 50W | MR16 | GU5,3
Description: Recessed Spots Fixed

5 YEAR

IP20
offer



50105U
50105U/W White

E-A⁺⁺
Lamp type: 50W | MR16 | GU10
Description: Recessed Spots Fixed

5 YEAR

IP20
offer



10105AR
10105AR/AL Natural Aluminium

E-A⁺⁺
Cat. page: 31
Lamp type: 50W | MR16 | GU5,3
Description: Recessed Spots Fixed

5 YEAR

IP20
offer



50105AR
50105AR/AL Natural Aluminium

E-A⁺⁺
Cat. page: 31
Lamp type: 50W | MR16 | GU5,3
Description: Recessed Spots Fixed

5 YEAR

IP20
offer



50105GL4
50105GL4/MC Brushed chrome

E-A⁺⁺
Cat. page: 32
Lamp type: 35W | MR16 | GU10
Description: Recessed Spots Fixed

5 YEAR

IP20
offer

LED BUILT IN



10101C
10101C/C/D Chrome Daylight

A-A⁺⁺

Cat. page: 65
Lamp type: 1W | LED | 12V AC
Description: Recessed Cabinet Light
(Requires 12V AC transformer)

2 YEAR

DARK LIGHT
IP20
offer

LED BUILT IN



10113M
10113M/W/W White Warm white

A-A⁺⁺

Lamp type: 13W | COB LED | 350mA
Description: Assymmetric LED Spot
(Requires 350mA driver)

5 YEAR

DARK LIGHT
IP20
offer

LED BUILT IN



10107R
10107R/W/W White Warm white

A-A⁺⁺

Cat. page: 63
Lamp type: 5W | SMD 3030 | 350mA
Description: Decorative LED Spot
(Complete with 350mA driver)

2 YEAR

IP20
offer

LED BUILT IN



10101G
10101G/D Frosted Daylight

A-A⁺⁺

Cat. page: 64
Lamp type: 1W | LED | 350mA
Description: The LED Glass Range
(Requires 350mA driver e.g. 89004)

3 YEAR

IP20
offer

LED BUILT IN



10103G
10103G/D Frosted Daylight
10103G/W Frosted Warm white


A-A⁺⁺

Cat. page: 64
Lamp type: 3W | LED | 350mA
Description: The LED Glass Range
(Requires 350mA driver e.g. 89004)

3 YEAR

IP20
offer

LED BUILT IN



10106G
10106G/D Frosted Daylight
10106G/W Frosted Warm white

A-A⁺⁺

Cat. page: 64
Lamp type: 6W | LED | 350mA
Description: The LED Glass Range
(Requires 350mA driver e.g. 89008)

3 YEAR

IP20
offer

LED BUILT IN



10103GL
10103GL/D Glass Daylight
10103GL/W Glass Warm white

A-A⁺⁺

Cat. page: 63
Lamp type: 3x1W | LED | 350mA
Description: LED Decorative Range
(Requires 350mA driver e.g. 89004)

2 YEAR

IP42
offer

LED BUILT IN



10103A
10103A/W/D Aluminium Warm white + Daylight

A-A⁺⁺

Cat. page: 63
Lamp type: 3x1W+18 SMD LED Ring | 2x350mA
Description: LED Decorative Range
(Requires 2x350mA drivers e.g. 89004)

2 YEAR

IP42
offer

LED BUILT IN



10103A
10103A/D/BL Aluminium Daylight + Blue

A-A⁺⁺

Cat. page: 63
Lamp type: 3x1W+ 18 SMD LED Ring | 2x350mA
Description: LED Decorative Range
(Requires 2x350mA drivers e.g. 89004)

2 YEAR

IP20
offer

LED BUILT IN



10103N
10103N/W/D/35 White Daylight
10103N/W/W/35 White Warm white

A-A⁺

Cat. page: 44
Lamp type: 3x1W | LED | 350mA
Description: Recessed Spots Fixed LED
(Requires 350mA driver e.g. 89004)

2 YEAR

IP20
offer

LED BUILT IN



10103N
10103N/B/D/35 Black Daylight
10103N/B/W/35 Black Warm white

A-A⁺

Cat. page: 44
Lamp type: 3x1W | LED | 350mA
Description: Recessed Spots Fixed LED
(Requires 350mA driver e.g. 89004)

2 YEAR

IP20
offer

LED BUILT IN



10103N
10103N/AL/D/35 Alum. Daylight
10103N/AL/W/35 Alum. Warm white

A-A⁺

Cat. page: 44
Lamp type: 3x1W | LED | 350mA
Description: Recessed Spots Fixed LED
(Requires 350mA driver e.g. 89004)

2 YEAR

IP65
offer

LED BUILT IN



10103NP
10103NP/AL/D/35 Alum. Daylight
10103NP/AL/W/35 Alum. Warm white

A-A⁺

Cat. page: 56
Lamp type: 3x1W | LED | 350mA
Description: Recessed Spots Fixed LED
(Requires 350mA driver e.g. 89004)

2 YEAR

IP20
offer

LED BUILT IN



10103L
10103L/D/35 Alum. Daylight
10103L/W/35 Alum. Warm white

A-A⁺

Cat. page: 43
Lamp type: 3x1W | LED | 350mA
Description: Recessed Spots Fixed LED
(Requires 350mA driver e.g. 89004)

2 YEAR

IP20
offer

LED BUILT IN



50103L
50103L/D/35 Alum. Daylight
50103L/W/35 Alum. Warm white

A-A⁺

Cat. page: 43
Lamp type: 3x1W | LED | 350mA
Description: Recessed Spots Fixed LED
(Requires 350mA driver e.g. 89004)

2 YEAR

IP20
offer

LED BUILT IN



50401L
50401L/D/35 Alum. Daylight
50401L/W/35 Alum. Warm white

A-A⁺

Cat. page: 43
Lamp type: 4x1W | LED | 350mA
Description: Recessed Spots Fixed LED
(Requires 350mA driver e.g. 89006P)

2 YEAR

IP20
offer

LED BUILT IN



50601L
50601L/D/35 Alum. Daylight
50601L/W/35 Alum. Warm white

A-A⁺

Cat. page: 43
Lamp type: 3x1W | LED | 350mA
Description: Recessed Spots Fixed LED
(Requires 350mA driver e.g. 89008)

2 YEAR

IP20
offer

LED BUILT IN



50101
50101/AL/D Alum. Daylight
50101/AL/BL Alum. Blue

A-A⁺

Cat. page: 65
Lamp type: 9x0,2W | LED
Description: Recessed Spots Fixed LED
(Complete with 230V driver)

2 YEAR



Adjustable Round

IP20

offer

11103A

11103A/MC Brushed chrome

E-A⁺⁺

Cat. page: 71

Lamp type: 35W | MR11 | GU4

Description: Recessed Spots Adjustable



IP20

offer



11105

11105/BS Brass

E-A⁺⁺

Cat. page: 71

Lamp type: 50W | MR16 | GU5,3

Description: Recessed Spots Adjustable



IP20

offer



11103C

11103C/C Chrome

E-A⁺⁺

Cat. page: 73

Lamp type: 35W | MR11 | GU4

Description: The Lock Ring Range



IP20

offer



11105C

11105C/ABS Antique brass

E-A⁺⁺

Cat. page: 73

Lamp type: 50W | MR16 | GU5,3

Description: The Lock Ring Range



IP20

offer



11105C

11105C/N Natural

E-A⁺⁺

Cat. page: 73

Lamp type: 50W | MR16 | GU5,3

Description: The Lock Ring Range



IP20

offer



11105CF

11105CF/W White

E-A⁺⁺

Cat. page: 73

Lamp type: 35W | MR16 | GU10 | Firehood

Description: The Lock Ring Range



IP20

offer



11105CF

11105CF/MC Brushed chrome

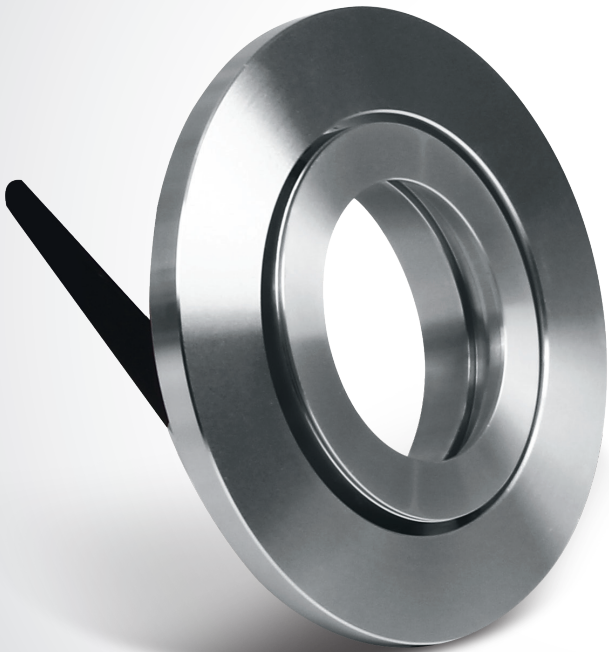
E-A⁺⁺

Cat. page: 73

Lamp type: 35W | MR16 | GU10 | Firehood

Description: The Lock Ring Range





Dual Ring Range

IP20

offer

11105AC

11105AC/AL Aluminium

E-A⁺⁺

Cat. page: 82
Lamp type: 50W | MR16 | GU5,3
Description: Dual Ring Range



IP20

offer



51103AB

51103AB/AL Aluminium

E-A⁺⁺

Cat. page: 82
Lamp type: 35W | MR11 | GU4
Description: The Lock Ring Range



IP20

offer



51103

51103/MC Brushed chrome

E-A⁺⁺

Cat. page: 77
Lamp type: 35W | MR11 | GU4
Description: The Lock Ring Range



IP20

offer



51105GA

51105GA/W White

E-A⁺⁺

Cat. page: 78
Lamp type: 50W | MR16 | GU10
Description: Recessed Spots Adjustable
(Supplied with GU10 50W halogen lamp)



IP20

offer



51105GA

51105GA/MC Brushed chrome

E-A⁺⁺

Cat. page: 78
Lamp type: 50W | MR16 | GU10
Description: Recessed Spots Adjustable
(Supplied with GU10 50W halogen lamp)



IP20

offer



51305B

51305B/AL Aluminium

E-A⁺⁺

Cat. page: 95
Lamp type: 3x50W | MR16 | GU5,3
Description: Recessed Spots Adjustable





Adjustable LED

IP20

offer

LED
BUILT IN

11103L

11103L/D/15 Alum. Daylight
11103L/W/15 Alum. Warm white

A-A⁺⁺

Cat. page: 109
Lamp type: 3x1W | LED | 350mA
Description: Recessed Spots Adjustable LED
(Requires 350mA driver e.g. 89004)



IP20

offer

LED
BUILT IN



11103LW

11103LW/D/35 White Daylight

A-A⁺⁺

Cat. page: 109
Lamp type: 3x1W | LED | 350mA
Description: 3xLED Round Spots
(Requires 350mA driver e.g. 89004)



IP20

offer

LED
BUILT IN



11103LB

11103LB/D/35 Black Daylight
11103LB/W/35 Black Warm white

A-A⁺⁺

Cat. page: 109
Lamp type: 3x1W | LED | 350mA
Description: 3xLED Round Spots
(Requires 350mA driver e.g. 89004)



IP20

offer

LED
BUILT IN



11303L

11303L/AL/D/35 Alum. Daylight

A-A⁺⁺

Cat. page: 109
Lamp type: 3x3W | LED | 700mA
Description: 3xLED Round Spots
(Requires 700mA driver e.g. 89015A)



IP20

offer

LED
BUILT IN



11103N

11103N/W/D/35 Alum. Daylight

A-A⁺⁺

Cat. page: 108
Lamp type: 3x1W | LED | 350mA
Description: 3x1W Glass Lens Spots
(Requires 350mA driver e.g. 89004)



IP20

offer

LED
BUILT IN



11103N

11103N/B/D/35 Black Daylight
11103N/B/W/35 Black Warm white

A-A⁺⁺

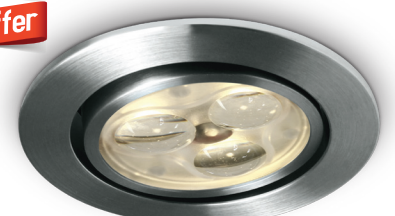
Cat. page: 108
Lamp type: 3x1W | LED | 350mA
Description: 3x1W Glass Lens Spots
(Requires 350mA driver e.g. 89004)



IP20

offer

LED
BUILT IN



11103N

11103N/AL/D/35 Alum. Daylight
11103N/AL/W/35 Alum. Warm white

A-A⁺⁺

Cat. page: 108
Lamp type: 3x1W | LED | 350mA
Description: 3x1W Glass Lens Spots
(Requires 350mA driver e.g. 89004)



IP20
offer

LED BUILT IN



11101B
11101B/D/15 Black Daylight
11101B/D/35 Black Daylight

A-A⁺⁺

Cat. page: 105
Lamp type: 1W | LED | 350mA | 15°/35°
Description: The 1W Mini Series
(Requires 350mA driver e.g. 89004)

2 YEAR

IP20
offer

LED BUILT IN



11103LC
11103LC/B/D/15 Black Daylight
11103LC/B/D/35 Black Daylight

A-A⁺⁺

Cat. page: 107
Lamp type: 3W | LED | 700mA | 15°/35°
Description: The 3W Mini Series
(Requires 700mA driver e.g. 89004A)

2 YEAR

DARK LIGHT
IP20
offer

LED BUILT IN



11103D
11103D/W/C White Cool white

A-A⁺⁺

Cat. page: 119
Lamp type: 3x1W | LED | 350mA
Description: The Dark Light Range
(Requires 350mA driver e.g. 89004)

2 YEAR

DARK LIGHT
IP20
offer

LED BUILT IN



11103D
11103D/G/C Grey Cool white
11103D/G/W Grey Warm white

A-A⁺⁺

Cat. page: 119
Lamp type: 3x1W | LED | 350mA
Description: The Dark Light Range
(Requires 350mA driver e.g. 89004)

2 YEAR

IP20
offer

LED BUILT IN



11106A
11106A/AL/C Alum. Cool white
11106A/AL/W Alum. Warm white


A-A⁺⁺

Cat. page: 115
Lamp type: 6W | LED | 100-240V
Description: The COB Round Spots
(Complete with driver)

2 YEAR

IP20
offer

LED BUILT IN



51101W
51101W/D/35 White Daylight

A-A⁺⁺

Cat. page: 105
Lamp type: 1W | LED | 350mA
Description: The 1W Mini Series
(Requires 350mA driver e.g. 89004)

2 YEAR

IP20
offer

LED BUILT IN



51101B
51101B/D/35 Black Daylight

A-A⁺⁺

Cat. page: 105
Lamp type: 1W | LED | 350mA
Description: The 1W Mini Series
(Requires 350mA driver e.g. 89004)

2 YEAR

IP20
offer

LED BUILT IN



51103LC
51103LC/AL/D/35 Alum. Daylight


A-A⁺⁺

Cat. page: 107
Lamp type: 3W | LED | 700mA
Description: The 3W Mini Series
(Requires 700mA driver e.g. 89004A)

2 YEAR

IP20
offer

LED BUILT IN

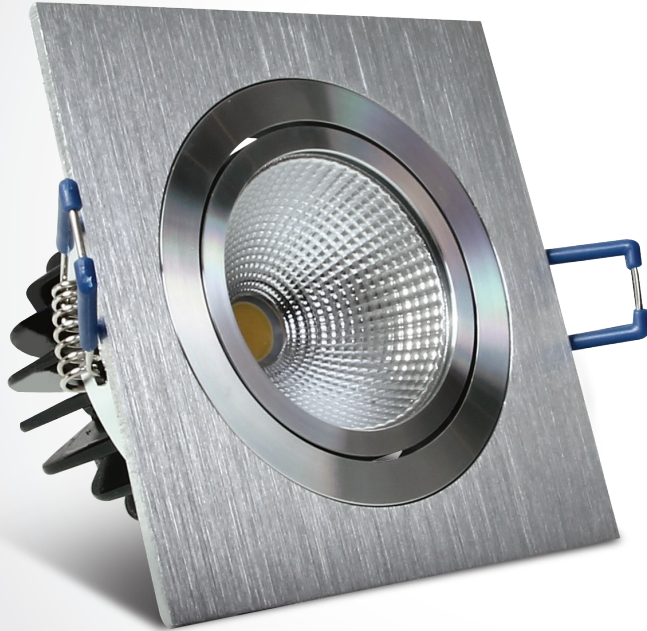


51103L
51103L/D/15 Alum. Daylight
51103L/D/35 Alum. Daylight
51103L/W/15 Alum. Warm white

A-A⁺⁺

Cat. page: 110
Lamp type: 3x1W | LED | 350mA | 15°/35°
Description: The 3x1W Square Spots
(Requires 350mA driver e.g. 89004)

2 YEAR



Adjustable Square

IP20

offer

LED
BUILT IN

51112

51112/AL/W Alum. Warm white

A-A⁺⁺

Cat. page: 113

Lamp type: 12W | COB LED | 700mA

Description: The 12W COB Range

(Requires 700mA driver e.g. 89015A)



IP20

offer

LED
BUILT IN



51103LW

51103LW/D/35 White Daylight

A-A⁺⁺

Cat. page: 110

Lamp type: 3x1W | LED | 350mA

Description: The 3x1W Square Spots
(Requires 350mA driver e.g. 89004)



IP20

offer

LED
BUILT IN



51103LB

51103LB/D/35 Black Daylight
51103LB/W/35 Black Warm white

A-A⁺⁺

Cat. page: 110

Lamp type: 3x1W | LED | 350mA

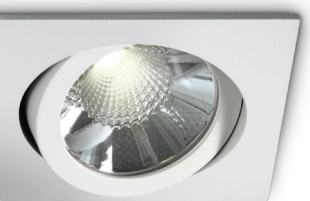
Description: The 3x1W Square Spots
(Requires 350mA driver e.g. 89004)



IP20

offer

LED
BUILT IN



51106A

51106A/W/C White Cool white

A-A⁺⁺

Cat. page: 116

Lamp type: 6W | LED | 100-240V

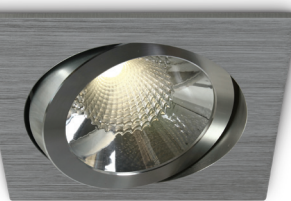
Description: The COB Square Spots
(Complete with driver)



IP20

offer

LED
BUILT IN



51106A

51106A/AL/W Alum. Warm white

A-A⁺⁺

Cat. page: 116

Lamp type: 6W | LED | 100-240V

Description: The COB Square Spots
(Complete with driver)



IP20

offer

LED
BUILT IN



51110A

51110A/W/C White Cool white
51110A/W/W White Warm white

A-A⁺⁺

Cat. page: 116

Lamp type: 10W | LED | 100-240V

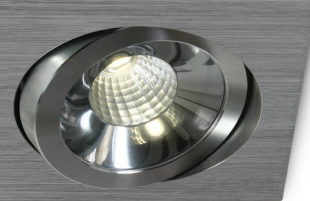
Description: The COB Square Spots
(Complete with driver)



IP20

offer

LED
BUILT IN



51110A

51110A/AL/C Alum. Cool white
51110A/AL/W Alum. Warm white

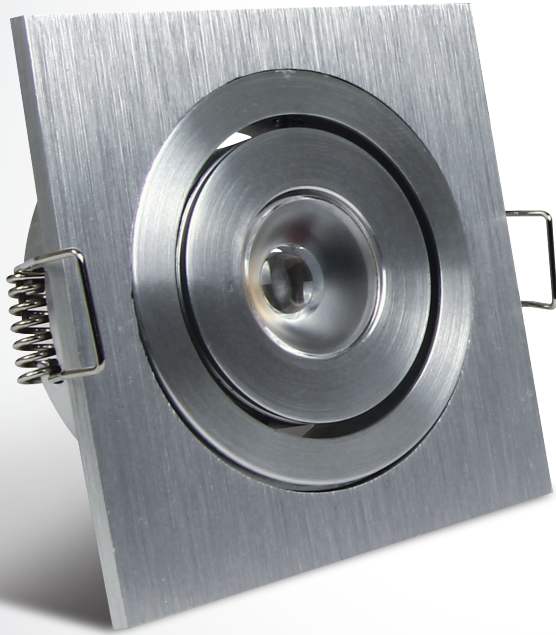
A-A⁺⁺

Cat. page: 116

Lamp type: 10W | LED | 100-240V

Description: The COB Square Spots
(Complete with driver)





Mini Series

IP20

offer

LED
BUILT IN

51101AL

51101AL/D/15 Alum. Daylight
51101AL/W/15 Alum. Warm

A-A⁺⁺

Cat. page: 105
Lamp type: 1W | LED | 350mA
Description: The 1W Mini Series
(Requires 350mA driver e.g. 89004)



IP20

offer

LED
BUILT IN



51101AL

51101AL/BL/15 Aluminium Blue

A-A⁺⁺

Cat. page: 105
Lamp type: 1W | LED | 350mA
Description: The 1W Mini Series
(Requires 350mA driver e.g. 89004)



IP20

offer

LED
BUILT IN



51201AL

51201AL/D/15 Alum. Daylight
51201AL/D/35 Alum. Daylight

A-A⁺⁺

Cat. page: 106
Lamp type: 2x1W | LED | 350mA | 15°/35°
Description: The 1W Mini Square
(Requires 350mA driver e.g. 89004)



IP20

offer

LED
BUILT IN



51301AL

51301AL/D/15 Alum. Daylight
51301AL/W/15 Alum. Warm white

A-A⁺⁺

Cat. page: 106
Lamp type: 3x1W | LED | 350mA | 15°
Description: The 1W Mini Square
(Requires 350mA driver e.g. 89004)



IP20

offer

LED
BUILT IN



51301AL

51301AL/D/35 Alum. Daylight
51301AL/W/35 Alum. Warm white

A-A⁺⁺

Cat. page: 106
Lamp type: 3x1W | LED | 350mA | 35°
Description: The 1W Mini Square
(Requires 350mA driver e.g. 89004)



IP20

offer

LED
BUILT IN



51401AL

51401AL/D/15 Alum. Daylight
51401AL/W/15 Alum. Warm white

A-A⁺⁺

Cat. page: 106
Lamp type: 3x1W | LED | 350mA | 15°
Description: The 1W Mini Square
(Requires 350mA driver e.g. 89004)



IP20

offer

LED
BUILT IN



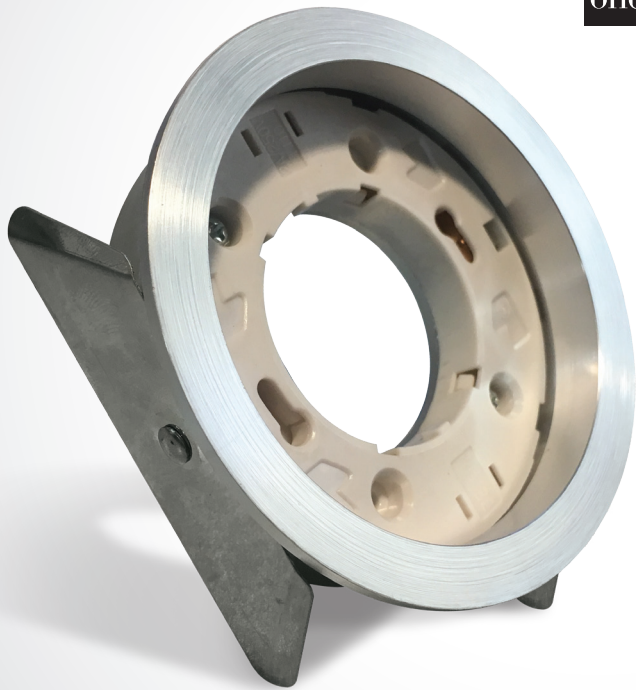
51401AL

51401AL/D/35 Alum. Daylight
51401AL/W/35 Alum. Warm white

A-A⁺⁺

Cat. page: 106
Lamp type: 3x1W | LED | 350mA | 35°
Description: The 1W Mini Square
(Requires 350mA driver e.g. 89004)





GX53 Downlight

IP20

offer

10004

10004/AL Aluminium

B-A⁺⁺

Cat. page: 138

Lamp type: 9W | GX53

Description: The GX53 Downlight



IP20

offer



10007

10007/W White

B-A⁺⁺

Cat. page: 137

Lamp type: 9W | GX53

Description: The GX53 Downlight



IP20

offer



10007

10007/MC Brushed chrome

B-A⁺⁺

Cat. page: 137

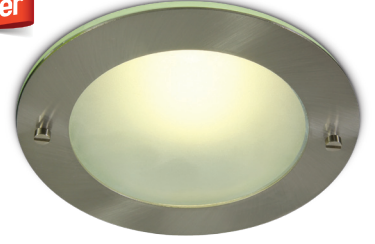
Lamp type: 9W | GX53

Description: The GX53 Downlight



IP20

offer



10115BF

10115BF/MC Brushed chrome

B-A⁺⁺

Cat. page: 139

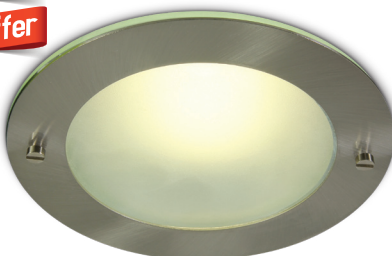
Lamp type: 15W | E27

Description: Downlights Fixed



IP20

offer



10220BF

10220BF/MC Brushed chrome

B-A⁺⁺

Cat. page: 139

Lamp type: 2x20W | E27

Description: Downlights Fixed



IP20

offer



10220CF

10220CF/W White

B-A⁺⁺

Cat. page: 140

Lamp type: 2x20W | E27

Description: Downlights Fixed



IP20

offer



10220CF

10220CF/MC Brushed chrome

B-A⁺⁺


Cat. page: 140

Lamp type: 2x20W | E27

Description: Downlights Fixed



IP20
offer



10215D
10215D/MC Brushed chrome

B-A⁺⁺
Cat. page: 140
Lamp type: 2x15W | E27
Description: Downlights Fixed

5 YEAR

IP20
offer



10220D
10220D/W White

B-A⁺⁺
Cat. page: 140
Lamp type: 2x20W | E27
Description: Downlights Fixed

5 YEAR

IP20
offer




10220D
10220D/MC Brushed chrome

B-A⁺⁺
Cat. page: 140
Lamp type: 2x20W | E27
Description: Downlights Fixed

5 YEAR

IP20
offer



10220E
10220E/W White

B-A⁺⁺
Cat. page: 140
Lamp type: 2x20W | E27
Description: Downlights Fixed

5 YEAR

IP20
offer



50115BF
50115BF/W White

B-A⁺⁺
Cat. page: 139
Lamp type: 15W | E27
Description: Downlights Fixed

5 YEAR

IP20
offer



50115BF
50115BF/MC Brushed chrome

B-A⁺⁺
Cat. page: 139
Lamp type: 15W | E27
Description: Downlights Fixed

5 YEAR

IP20
offer



50220BF
50220BF/W White
50220BF/MC Brushed chrome

B-A⁺⁺
Cat. page: 139
Lamp type: 15W | E27
Description: Downlights Fixed

5 YEAR

IP20
offer




10220T
10220T White

B-A⁺⁺
Cat. page: 141
Lamp type: 2x20W | E27 | Trimless
Description: Downlights Fixed

5 YEAR

IP20
offer



50220T
50220T White

B-A⁺⁺
Cat. page: 141
Lamp type: 2x20W | E27 | Trimless
Description: Downlights Fixed

5 YEAR



Dark Light Downlight

DARK LIGHT

IP20

offer

LED BUILT IN

10112KD

10112KD/W/C White Warm white

A-A⁺⁺

Cat. page: 176

Lamp type: 12W | SMD LED | 350mA

Description: Downlights Fixed LED

(Requires 350mA driver e.g. 89015)



DARK LIGHT
IP20
offer

LED BUILT IN



10105E

10105E/AL/C Alum. Cool white
10105E/AL/W Alum. Warm white

A-A⁺⁺

Cat. page: 177

Lamp type: 5W | LED | 500mA

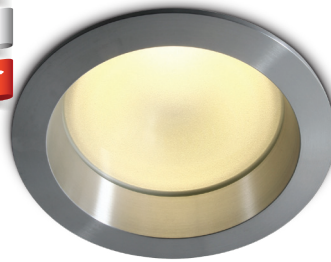
Description: Downlights Fixed LED

(Requires 500mA driver e.g. 89006PC)



DARK LIGHT
IP20
offer

LED BUILT IN



10115E

10115E/AL/C Alum. Cool white
10115E/AL/W Alum. Warm white

A-A⁺⁺

Cat. page: 177

Lamp type: 15W | LED | 700mA

Description: Downlights Fixed LED

(Requires 700mA driver e.g. 89015A)



DARK LIGHT
IP20
offer

LED BUILT IN



10130A

10130A/W/W White Warm white

A-A⁺⁺

Cat. page: 177

Lamp type: 30W | LED | 100-240V

Description: Downlights Fixed LED

(Complete with driver)



DARK LIGHT
IP20
offer

LED BUILT IN



10130A

10130A/AL/W Alum. Warm white

A-A⁺⁺

Cat. page: 177

Lamp type: 30W | LED | 100-240V

Description: Downlights Fixed LED

(Complete with driver)



IP20
offer

LED BUILT IN



10107CD

10107CD/W/C White Cool white
10107CD/W/W White Warm white

A-A⁺⁺

Cat. page: 167

Lamp type: 7W | COB LED | 230V

Description: Downlights Fixed LED

(Complete with driver)



IP20
offer

LED BUILT IN



10115CD

10115CD/W/C White Cool white
10115CD/W/W White Warm white

A-A⁺⁺

Cat. page: 167

Lamp type: 15W | COB LED | 230V

Description: Downlights Fixed LED

(Complete with driver)



IP20
offer

LED
BUILT IN



10130CD
10130CD/W/C White Cool white
10130CD/W/W White Warm white

A-A⁺⁺

Cat. page: 168
Lamp type: 30W | COB LED | 230V
Description: Downlights Fixed LED
(Complete with driver)

2
YEAR

IP20
offer

LED
BUILT IN



10140CD
10140CD/W/W White Warm white

A-A⁺⁺

Cat. page: 168
Lamp type: 40W | COB LED | 230V
Description: Downlights Fixed LED
(Complete with driver)

2
YEAR

IP20
offer

LED
BUILT IN



10110C
10110C/G/W Grey Warm white

A-A⁺⁺

Cat. page: 164
Lamp type: 10W | COB LED | 230V
Description: Downlights Fixed LED
(Complete with driver)

2
YEAR

IP20
offer

LED
BUILT IN



10120C
10120C/W/W White Warm white

A-A⁺⁺

Cat. page: 164
Lamp type: 20W | LED | 230V
Description: Downlights Fixed LED
(Complete with driver)

2
YEAR

IP20
offer

LED
BUILT IN



10120C
10120C/G/C Grey Cool white
10120C/G/W Grey Warm white

A-A⁺⁺

Cat. page: 164
Lamp type: 20W | LED | 230V
Description: Downlights Fixed LED
(Complete with driver)

2
YEAR

IP20
offer

LED
BUILT IN



10130C
10130C/W/W White Warm white

A-A⁺⁺

Cat. page: 164
Lamp type: 30W | LED | 230V
Description: Downlights Fixed LED
(Complete with driver)

2
YEAR

IP20
offer

LED
BUILT IN



10130C
10130C/G/C Grey Cool white
10130C/G/W Grey Warm white

A-A⁺⁺

Cat. page: 164
Lamp type: 30W | LED | 230V
Description: Downlights Fixed LED
(Complete with driver)

2
YEAR

IP20
offer

LED
BUILT IN



10112
10112/G/D Grey Daylight


A-A⁺⁺

Cat. page: 175
Lamp type: 9W | LED | 230V
Description: Downlights Fixed LED
(Complete with driver)

2
YEAR

IP20
offer

LED
BUILT IN



10112
10112/G/W Grey Warm white

A-A⁺⁺

Cat. page: 175
Lamp type: 12W | LED | 230V
Description: Downlights Fixed LED
(Complete with driver)

2
YEAR

IP20
offer

LED BUILT IN



10128
10128/G/D Grey Daylight
10128/G/W Grey Warm white

A-A⁺

Cat. page: 175
Lamp type: 28W | LED | 230V
Description: Downlights Fixed LED
(Complete with driver)

2 YEAR

DARK LIGHT
IP20
offer

Slightly scratched

LED BUILT IN



10108FD
10108FD/W/C/SS White Cool white
10108FD/W/W/SS White Warm white

A-A⁺

Cat. page: 160
Lamp type: 8W | SMD 2835 | 230V
Description: Downlights Fixed LED
(Complete with driver)

2 YEAR

DARK LIGHT
IP20
offer

Slightly scratched

LED BUILT IN



10116FD
10116FD/W/C/SS White Cool white
10116FD/W/W/SS White Warm white

A-A⁺

Cat. page: 160
Lamp type: 16W | SMD 2835 | 230V
Description: Downlights Fixed LED
(Complete with driver)

2 YEAR

DARK LIGHT
IP20
offer

Slightly scratched

LED BUILT IN



10122FD
10122FD/W/C/SS White Cool white
1012FD/W/W/SS White Warm white

A-A⁺

Cat. page: 160
Lamp type: 22W | SMD 2835 | 230V
Description: Downlights Fixed LED
(Complete with driver)

2 YEAR

IP53
offer

LED BUILT IN



10105K
10105K/G/C Grey Cool white
10105K/G/W Grey Warm white

A-A⁺

Cat. page: 171
Lamp type: 5W | COB LED | 230V
Description: Downlights Fixed LED
(Complete with driver)

2 YEAR

IP53
offer

LED BUILT IN



10110K
10110K/G/W Grey Warm white

A-A⁺

Cat. page: 171
Lamp type: 10W | COB LED | 230V
Description: Downlights Fixed LED
(Complete with driver)

2 YEAR

IP53
offer

LED BUILT IN



10120K
10120K/G/W Grey Warm white

A-A⁺

Cat. page: 172
Lamp type: 20W | COB LED | Dimmable | 230V
Description: Downlights Fixed LED
(Complete with dimmable driver)

2 YEAR

IP53
offer

LED BUILT IN



10130K
10130K/G/W Grey Warm white

A-A⁺

Cat. page: 172
Lamp type: 30W | COB LED | Dimmable | 230V
Description: Downlights Fixed LED
(Complete with dimmable driver)

2 YEAR

IP53
offer

LED BUILT IN



10130KA
10130KA/G/W Grey Warm white

A-A⁺

Cat. page: 172
Lamp type: 30W | COB LED | Dimmable | 230V
Description: Downlights Fixed LED
(Complete with dimmable driver)

2 YEAR

IP44
offer

LED
BUILT IN



10115
10115/W/C White Cool white
10115/W/W White Warm white

A-A⁺⁺

Cat. page: 163
Lamp type: 15W | SMD 2835 | 230V
Description: Downlights Fixed LED
(Complete with driver)

2
YEAR

IP44
offer

LED
BUILT IN



10115
10115/G/C Grey Cool white

A-A⁺⁺

Cat. page: 163
Lamp type: 15W | SMD 2835 | 230V
Description: Downlights Fixed LED
(Complete with driver)

2
YEAR

IP44
offer

LED
BUILT IN



10124
10124/W/C White Cool white

A-A⁺⁺

Cat. page: 163
Lamp type: 24W | SMD 2835 | 230V
Description: Downlights Fixed LED
(Complete with driver)

2
YEAR

IP44
offer

LED
BUILT IN



10124
10124/G/C Grey Cool white
10124/G/W Grey Warm white


A-A⁺⁺

Cat. page: 163
Lamp type: 24W | SMD 2835 | 230V
Description: Downlights Fixed LED
(Complete with driver)

2
YEAR

IP20
offer

LED
BUILT IN



10112F
10112F/W/EW White Extra warm white

A-A⁺⁺

Cat. page: 145
Lamp type: 12W | SMD LED | 100-240V
Description: Downlights Fixed LED
(Complete with driver)

2
YEAR

IP20
offer

LED
BUILT IN



10120F
10120F/G/D Grey Daylight
10120F/G/W Grey Warm white

A-A⁺⁺

Cat. page: 145
Lamp type: 30W | SMD LED | 100-240V
Description: Downlights Fixed LED
(Complete with driver)

2
YEAR

LED Recessed Panel



IP20

offer

LED
BUILT IN

10148P

10148P/W/D White Daylight

A-A⁺

Lamp type: 48W | LED | 230V
Description: Downlights Fixed LED
Diameter 600mm.
(Complete with dimmable driver)

TRIAC



IP40

offer

LED
BUILT IN



50108F

50108F/G/D Grey Daylight

A-A⁺

Cat. page: 149
Lamp type: 8W | SMD LED | 100-240V
Description: Downlights Fixed LED
(Complete with driver)



IP40

offer

LED
BUILT IN



50116F

50116F/G/D Grey Daylight

A-A⁺

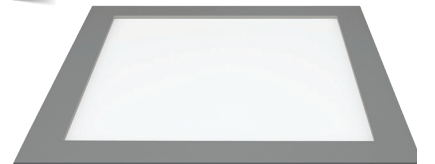
Cat. page: 149
Lamp type: 16W | SMD LED | 100-240V
Description: Downlights Fixed LED
(Complete with driver)



IP40

offer

LED
BUILT IN



50130F

50130F/G/D Grey Daylight

A-A⁺

Cat. page: 150
Lamp type: 30W | SMD LED | 100-240V
Description: Downlights Fixed LED
(Complete with driver)



IP20

offer

LED
BUILT IN



50143F

50143F/W/D White Daylight

A-A⁺

Cat. page: 154
Lamp type: 48W | SMD 2835 | 230V
Description: Downlights Fixed LED
(Complete with driver)



IP20

offer

LED
BUILT IN



50148F

50148F/W/C White Cool white

A-A⁺

Lamp type: 48W | SMD 2835 | Dimmable | 230V
Description: Downlights Fixed LED
(Complete with dimmable driver)

TRIAC





G53 Downlight

IP20

offer

11110AB

11110AB/B Black

E-A⁺⁺

Cat. page: 192

Lamp type: 75W | R111 | G53 | 12V

Description: Downlights Adjustable



IP20

offer



11110U

11110U/G Grey

E-A⁺⁺

Cat. page: 191

Lamp type: 75W | R111 | G53

Description: Downlights Adjustable



IP20

offer



51110

51110/G Grey

E-A⁺⁺

Cat. page: 191

Lamp type: 50W | R111 | G53

Description: Downlights Adjustable



IP20

offer



11070RD

11070RD/G Grey

E-A⁺⁺

Cat. page: 189

Lamp type: 75W | PAR30 | E27

Description: Adjustable Round



IP20

offer



11110H

11110H/W White

E-A⁺⁺

Cat. page: 198

Lamp type: 75W | R111 | GU10

Description: Downlights Adjustable



IP20
offer



11070R
11070R/G Grey

E-A⁺
Cat. page: 200
Lamp type: 70W | PAR30 | E27
Description: Multi System Modules

5 YEAR

IP20
offer



11110R
11110R/W White
11110R/G Grey

E-A⁺
Cat. page: 200
Lamp type: 70W | PAR30 | E27
Description: Multi System Modules

5 YEAR

IP20
offer



11106R
11106R/W/1 White
11106R/G/1 Grey

E-A⁺
Cat. page: 200
Lamp type: 20W | E27
Description: Multi System Modules

5 YEAR

offer



11100R
11100R/W White
11100R/G Grey

Cat. page: 199
Description: Multi System Metal Bases

5 YEAR

offer



51100R
51100R/W White
51100R/G Grey

Cat. page: 199
Description: Multi System Metal Bases

5 YEAR

offer



51200AR
51200AR/W White
51200AR/G Grey

Cat. page: 199
Description: Multi System Metal Bases

5 YEAR

offer



51200R
51200R/W White
51200R/G Grey

Cat. page: 199
Description: Multi System Metal Bases

5 YEAR

offer

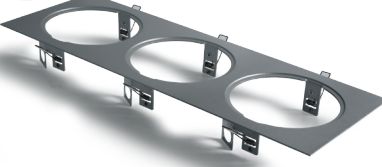


51300AR
51100AR/G Grey

Cat. page: 199
Description: Multi System Metal Bases

5 YEAR

offer



51300R
51100R/G Grey

Cat. page: 199
Description: Multi System Metal Bases

5 YEAR

offer



51400R
51400R/W White
51400R/G Grey

Cat. page: 199
Description: Multi System Metal Bases

5 YEAR

offer



51400AR
51400AR/W White
51400AR/G Grey

Cat. page: 199
Description: Multi System Metal Bases

5 YEAR

offer



51401R
51401R/W White
51401R/G Grey

Cat. page: 199
Description: Multi System Metal Bases

5 YEAR



Multi LED

IP20

offer

LED
BUILT IN

11109L

11109L/D/35 Alum. Daylight
11109L/W/35 Alum. Warm white

A-A⁺⁺

Cat. page: 206

Lamp type: 9x1W | LED | 350mA | 35°

Description: Downlights Adjustable LED
(Requires 350mA driver e.g. 89008)



IP20

offer

LED
BUILT IN



11112L

11112L/D/15 Alum. Daylight
11112L/W/15 Alum. Warm white

A-A⁺⁺

Cat. page: 206

Lamp type: 12x1W | LED | 350mA | 15°

Description: Downlights Adjustable LED
(Requires 350mA driver e.g. 89015)



IP20

offer

LED
BUILT IN



11112L

11112L/D/35 Alum. Daylight
11112L/W/35 Alum. Warm white

A-A⁺⁺

Cat. page: 206

Lamp type: 12x1W | LED | 350mA | 35°

Description: Downlights Adjustable LED
(Requires 350mA driver e.g. 89015)



IP20

offer

LED
BUILT IN



11118L

11118L/D/35 Alum. Daylight
11118L/W/35 Alum. Warm white

A-A⁺⁺

Cat. page: 206

Lamp type: 18x1W | LED | 350mA | 35°

Description: Downlights Adjustable LED
(Requires 350mA driver e.g. 89020)



IP20

offer

LED
BUILT IN



11106LB

11106LB/D/35 Black Daylight
11106LB/W/35 Black Warm white

A-A⁺⁺

Cat. page: 206

Lamp type: 6x1W | LED | 350mA | 35°

Description: Downlights Adjustable LED
(Requires 350mA driver e.g. 89008)



IP20

offer

LED
BUILT IN



11113V

11113V/AL/W Alum. Warm white

A-A⁺⁺

Lamp type: 13W | LED

Description: Mini High Power
LED Downlights
(Complete with 230V driver)



IP20

offer

LED
BUILT IN



11126V

11126V/AL/W Alum. Warm white

A-A⁺⁺


Lamp type: 26W | LED

Description: Mini High Power
LED Downlights
(Complete with 230V driver)



IP20
offer

LED
BUILT IN



11138
11138/W/C White Cool white
11138/W/W White Warm white

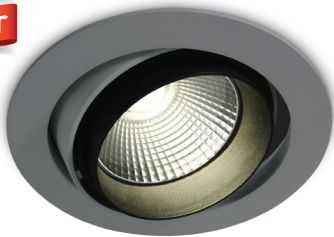
A-A⁺⁺

Cat. page: 207
Lamp type: 38W | COB LED | 230V
Description: Downlights Adjustable LED
(Complete with 230V driver)

2
YEAR

IP20
offer

LED
BUILT IN



11138
11138/G/C Grey Cool white


A-A⁺⁺

Cat. page: 207
Lamp type: 38W | COB LED | 230V
Description: Downlights Adjustable LED
(Complete with 230V driver)

2
YEAR

IP20
offer

LED
BUILT IN



51225
51225/W/W White Warm white

A-A⁺⁺

Lamp type: 2x25W | COB LED | 230V
Description: Downlights Adjustable LED
(Complete with 230V driver)

2
YEAR

DARK LIGHT
IP20
offer

LED
BUILT IN



11118TR
11118TR/G/C Grey Cool white
11118TR/G/W Grey Warm white

A-A⁺⁺

Cat. page: 213
Lamp type: 18W | COB LED | 230V
Description: Semi Trimless Downlights
(Complete with driver)

2
YEAR

IP20
offer

LED
BUILT IN



51120
51120/W/W White Warm white

A-A⁺⁺

Cat. page: 208
Lamp type: 20W | COB LED | 230V
Description: Downlights Adjustable LED
(Complete with 230V driver)

2
YEAR

IP20
offer

LED
BUILT IN



51120
51120/G/C Grey Cool white
51120/G/W Grey Warm white

A-A⁺⁺

Cat. page: 208
Lamp type: 20W | COB LED | 230V
Description: Downlights Adjustable LED
(Complete with 230V driver)

2
YEAR

IP20
offer

LED
BUILT IN



51220B
51220B/W/C White Cool white

A-A⁺⁺

Lamp type: 2x20W | COB LED | 230V
Description: Downlights Adjustable LED
(Complete with 230V driver)

2
YEAR

IP20
offer

LED
BUILT IN



11130B
11130B/W/C White Cool white


A-A⁺⁺

Cat. page: 221
Lamp type: 30W | COB LED | 230V
Description: COB Recessed Range
(Complete with 230V driver)

3
YEAR

IP20
offer

LED
BUILT IN



11135L
11135L/W/C White Cool white

A-A⁺⁺

Cat. page: 221
Lamp type: 35W | COB LED | 230V
Description: COB Recessed Range
(Complete with 230V driver)

3
YEAR

LED Strip Outdoor 24V



NO adhesive

IP68

offer

LED
BUILT IN

7820AW

7820AW/W Warm white

A-A⁺⁺

Cat. page: 228

Lamp type: 4,8W/m | 24V DC | IP68

Description: LED Strips - NO adhesive
(Requires 24V DC driver)

3
YEAR

IP68

offer

NO adhesive

LED
BUILT IN

7835AW

7835AW/D Daylight

A-A⁺⁺

Lamp type: 14,4W/m | 24V DC | IP68
Description: LED Strips - NO adhesive
(Requires 24V DC driver)

3
YEAR

IP54

offer

LED
BUILT IN

7810

7810/R Red
7810/P Pink

Cat. page: 265

Lamp type: 4,8W/m | LED | IP54
Description: Flex Lightline
(Requires 7814 power supply)

2
YEAR

IP54

offer

LED
BUILT IN

7810

7810/RBL Red/Blue

Cat. page: 265

Lamp type: 4,8W/m | LED | IP54
Description: Flex Lightline
(Requires 7818 controller RBL)

2
YEAR

IP20

offer

7818

7818 RBL Controller for 7810/RBL

Cat. page: 266

Connect maximum 30m

Description: Flex Lightline Controller

IP20

offer

Slightly scratched

7916A

7916A/AL Aluminium

2m profile + PC opal diffuser

Description: Wall mounted profile.
(Complete with 2 pairs end cups &
5 pcs fixing clips)

IP65

offer

LED
BUILT IN

7840

7840/Y Yellow

Cat. page: 255

Lamp type: 0,72W (3LEDs x 0,24W)

Description: LED Modules

(Supplied in 10pcs chain. Total length 1.7m)

(Requires 12V DC driver)

3
YEAR

IP65
offer



LED BUILT IN

7842
7842/D Daylight
7842/BL Blue
7842/GR Green
7842/Y Yellow

Cat. page: 255
Lamp type: 0,72W (3LEDs x 0,24W)
Description: LED Modules
(Supplied in 10pcs chain. Total length 1.25m) **3** YEAR

IP20
offer



LED BUILT IN

38207L
38207L/D Daylight
38207L/C Cool white
38207L/W Warm white

A-A⁺⁺
Cat. page: 258
Lamp type: 7W | LED
Description: Solid double LED Strips
(Includes power supply cable, corner cable, connector) **2** YEAR

IP20
offer



LED BUILT IN

38215L
38215L/D Daylight
38215L/W Warm white

A-A⁺⁺
Cat. page: 258
Lamp type: 15W | LED
Description: Solid double LED Strips
(Includes power supply cable, corner cable, connector) **2** YEAR

IP20
offer



LED BUILT IN

38230L
38230L/D Daylight
38230L/W Warm white

A-A⁺⁺
Cat. page: 258
Lamp type: 30W | LED
Description: Solid double LED Strips
(Includes power supply cable, corner cable, connector) **2** YEAR

IP20
offer



LED BUILT IN

38001A
38001A/D Daylight
38001A/W Warm white
38001A/BL Blue
38001A/RGB RGB

A-A⁺⁺
Cat. page: 263
Lamp type: 1W | LED | 24V DC
Description: Linkable modules.
Requires 24V DC driver. **3** YEAR

IP20
offer



LED BUILT IN

38002A
38002A/D Daylight
38002A/W Warm white
38002A/BL Blue
38002A/RGB RGB

A-A⁺⁺
Cat. page: 263
Lamp type: 3W | LED | 24V DC
Description: Linkable modules.
Requires 24V DC driver. **3** YEAR

IP20
offer



LED BUILT IN

38005A
38005A/D Daylight
38005A/W Warm white
38005A/BL Blue

A-A⁺⁺
Cat. page: 263
Lamp type: 6W | LED | 24V DC
Description: Linkable modules.
Requires 24V DC driver. **3** YEAR

offer



Power supply for 38001A, 38002A & 38005A

38006A Daylight & Warm white
38006B Blue
38006C RGB

Cat. page: 263
Description: Linkable modules.

offer

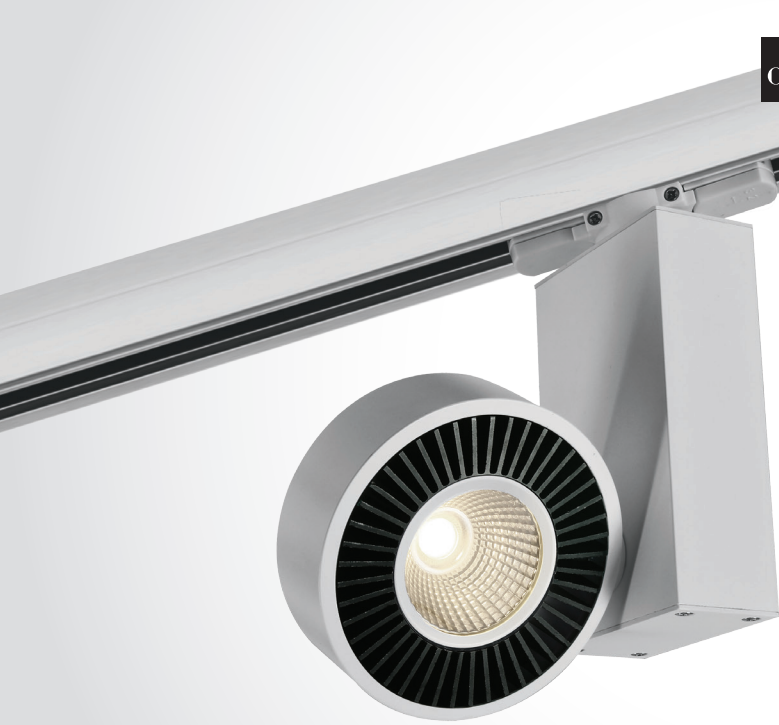


Corner cable for 38001A, 38002A & 38005A

38007A Daylight & Warm white
38007B Blue
38007C RGB

Cat. page: 263
Description: Linkable modules.

Track Spots



IP20

offer

LED
BUILT IN

65620T

65620T/W/W White Warm white

A-A⁺

Cat. page: 279
Lamp type: 20W | COB LED | 230V
Description: Track Spots
(Complete with 500mA driver)



IP20

offer

LED
BUILT IN

65620T2

65620T2/W/C White Cool white

A-A⁺

Cat. page: 279
Lamp type: 2x15W | COB LED | 230V
Description: Track Spots
(Complete with 700mA driver)



IP20

offer

LED
BUILT IN

65622T

65622T/W/C White Cool white
65622T/W/W White Warm white

A-A⁺

Cat. page: 282
Lamp type: 34W | COB LED | 230V
Description: Track Spots
(Complete with 900mA driver)



IP20

offer

LED
BUILT IN

65624T

65624T/W/C White Cool white
65624T/W/W White Warm white

A-A⁺

Cat. page: 281
Lamp type: 35W | COB LED | 230V
Description: Track Spots
(Complete with 900mA driver)



IP20

offer

LED
BUILT IN

65618T

65618T/W/C White Cool white
65618T/G/C Grey Cool white

A-A⁺

Cat. page: 281
Lamp type: 35W | COB LED | 230V
Description: Track Spots
(Complete with 900mA driver)



IP20

offer

LED
BUILT IN

65626T

65626T/W/C White Cool white
65626T/W/W White Warm white

A-A⁺

Cat. page: 280
Lamp type: 25W | COB LED | 100-240V
Description: Track Spots
(Complete with 580mA driver)



IP20

offer

LED
BUILT IN

65630T

65630T/W/W White Warm white

A-A⁺

Cat. page: 280
Lamp type: 25W | COB LED | 100-240V
Description: Track Spots
(Complete with 580mA driver)



Track Spots



IP20

offer

LED
BUILT IN

65608T

65608T/G/D Grey Daylight
65608T/G/W Grey Warm white

A-A⁺⁺

Cat. page: 269
Lamp type: 3x1W | LED | 230V
Description: Track Spots
(Complete with driver)



IP20

offer

LED
BUILT IN

65008T

65008T/G/D/24 Grey Daylight
65008T/G/W/24 Grey Warm white

A-A⁺⁺

Cat. page: 294
Lamp type: 10W | LED | 230V
Description: Track Spots
(Complete with driver)



IP20

offer

LED
BUILT IN

65611T

65611T/G/W Grey Warm white

A-A⁺⁺

Cat. page: 271
Lamp type: 15W | COB LED | 230V
Description: Track Spots
(Complete with 350mA driver)



IP20

offer

LED
BUILT IN

65612T

65612T/G/C Grey Cool white

A-A⁺⁺

Cat. page: 271
Lamp type: 30W | COB LED | 230V
Description: Track Spots
(Complete with 700mA driver)



IP20

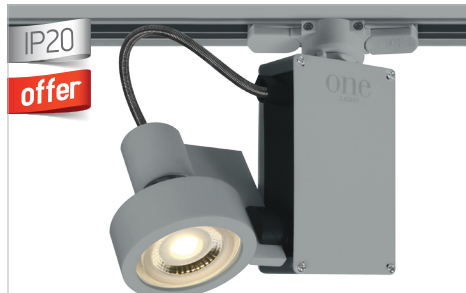
offer

65012T

65012T/G Grey

C-A⁺⁺

Cat. page: 293
Lamp type: 50W | MR16 | GU5,3
Description: Track Spots
(Complete with transformer 12V)



IP20

offer

65019T

65019T/G Grey

C-A⁺⁺

Cat. page: 293
Lamp type: 50W | MR16 | GU10
Description: Track Spots



IP20

offer

65011T

65011T/G Grey

C-A⁺⁺

Cat. page: 293
Lamp type: 75W | PAR30 | E27
Description: Track Spots
(Suitable for PAR30 LED lamp)





R111 Track Spot

IP20

offer

65514T

65514T/G Grey

C-A⁺⁺

Cat. page: 295

Lamp type: 75W | R111 | GU10

Description: Track Spots



IP20

offer

65534T

65534T/W White

B-A⁺⁺

Cat. page: 295

Lamp type: 70W | HQI | G8,5

Description: Track Spots

(Complete with electronic ballast)



IP20

offer

65234T

65234T/W White

B-A⁺⁺

Cat. page: 296

Lamp type: 70W | HQI | G8,5

Description: Track Spots

(Complete with electronic ballast)



IP20

offer

65234T

65234T/G Grey

B-A⁺⁺

Cat. page: 296

Lamp type: 70W | HQI | G8,5

Description: Track Spots

(Complete with electronic ballast)



IP20

offer

65235T

65235T/W White

B-A⁺⁺

Cat. page: 296

Lamp type: 35W | HQI | G8,5

Description: Track Spots

(Complete with electronic ballast)



IP20

offer

65235T

65235T/G Grey

B-A⁺⁺

Cat. page: 296

Lamp type: 35W | HQI | G8,5

Description: Track Spots

(Complete with electronic ballast)





Track Spots

IP20

offer

65010B

65010B/G Grey

B-A⁺⁺

Cat. page: 288
Lamp type: 70W | HQI | Rx7s
Description: Ceiling Mounted Spot
(Complete with electronic ballast)
(Suitable 8007 lamp)



IP20

offer

65010T

65010T/B Black

B-A⁺⁺

Cat. page: 288
Lamp type: 70W | HQI | Rx7s
Description: Track Spots
(Complete with electronic ballast)
(Suitable 8007 lamp)



IP20

offer

65010T

65010T/G Grey

B-A⁺⁺

Cat. page: 288
Lamp type: 70W | HQI | Rx7s
Description: Track Spots
(Complete with electronic ballast)
(Suitable 8007 lamp)



IP20

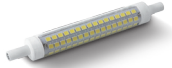
offer

65009T

65009T/G Grey

C-A⁺⁺

Cat. page: 288
Lamp type: 100W | Halogen | R7s
Description: Track Spots
(Suitable 7610L LED lamp)



IP20

offer

65510T

65510T/W White

B-A⁺⁺

Cat. page: 287
Lamp type: 70W | HQI | Rx7s
Description: Track Spots
(Complete with electronic ballast)
(Suitable 8007 lamp)



IP20

offer

65510T

65510T/B Black

B-A⁺⁺

Cat. page: 287
Lamp type: 70W | HQI | Rx7s
Description: Track Spots
(Complete with electronic ballast)
(Suitable 8007 lamp)



IP20

offer

65510T

65510T/G Grey

B-A⁺⁺

Cat. page: 287
Lamp type: 70W | HQI | Rx7s
Description: Track Spots
(Complete with electronic ballast)
(Suitable 8007 lamp)



T5 Linkable



IP20

offer

38135A

38135A/W White

B-A⁺⁺

Cat. page: 311
Lamp type: 35W | T5 | Diffuser
Description: T5 Linkable
(Includes warm white lamp, power supply cable, corner cable, connector)



IP20

offer



36255B

36255B/G Grey

B-A⁺⁺

Lamp type: 2x55W | 2G11 | 230V
Description: Office Lighting
(Complete with electronic ballast)



IP20

offer



38154A

38154A/G Grey

A-A⁺⁺

Cat. page: 318
Lamp type: 54W | T5 | 230V
Description: T5 Suspended Linear
(Complete with electronic ballast)



IP20

offer



38154M

38154M/G Grey

A-A⁺⁺

Cat. page: 318
Lamp type: 54W | T5 | 230V
Description: T5 Suspended Linear
(Complete with electronic ballast)





GU10 Spots

IP20

offer

62110

62110/AL Natural Aluminium

E-A⁺⁺

Cat. page: 322
Lamp type: 75W | R111 | GU10
Description: Wall & Ceiling Lights
(Suitable R111 GU10 LED lamp)



IP20

offer



62110A

62110A/AL Natural Aluminium

E-A⁺⁺

Cat. page: 322
Lamp type: 75W | R111 | GU10
Description: Wall & Ceiling Lights
(Suitable R111 GU10 LED lamp)



IP20

offer



62210A

62210A/AL Natural Aluminium

E-A⁺⁺

Cat. page: 322
Lamp type: 2x75W | R111 | GU10
Description: Wall & Ceiling Lights
(Suitable R111 GU10 LED lamp)



IP20

offer



62310A

62310A/AL Natural Aluminium

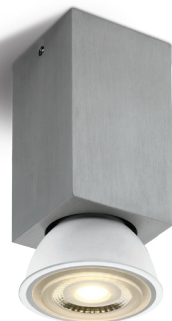
E-A⁺⁺

Cat. page: 322
Lamp type: 3x75W | R111 | GU10
Description: Wall & Ceiling Lights
(Suitable R111 GU10 LED lamp)



IP20

offer



12132

12132/AL Natural Aluminium

E-A⁺⁺

Cat. page: 337
Lamp type: 50W | MR16 | GU10
Description: Ceiling Lights



IP20

offer



12126

12126/AL Natural Aluminium

E-A⁺⁺

Cat. page: 337
Lamp type: 50W | MR16 | GU10
Description: Ceiling Lights



IP20

offer



12124

12124/AL Natural Aluminium

E-A⁺⁺

Cat. page: 337
Lamp type: 35W | MR16 | GU10
Description: Ceiling Lights



IP20
offer



12120
12120/AL Natural Aluminium

E-A⁺⁺
Cat. page: 337
Lamp type: 25W | G9 | 100-240V
Description: Ceiling Lights

3 YEAR

IP20
offer



12140
12140/G Grey

E-A⁺⁺
Cat. page: 333
Lamp type: 75W | PAR30 | E27
Description: Adjustable Ceiling Lights
(Suitable PAR30 LED lamp)

5 YEAR

IP20
offer



12140G
12140G/G Grey

E-A⁺⁺
Cat. page: 333
Lamp type: 75W | R111 | GU10
Description: Adjustable Ceiling Lights
(Suitable R111 GU10 LED lamp)

5 YEAR

IP20
offer



12138G
12138G/W White
12138G/G Grey

E-A⁺⁺
Cat. page: 333
Lamp type: 75W | R111 | GU10
Description: Adjustable Ceiling Lights

5 YEAR

IP20
offer



12138G
12138G/B Black

E-A⁺⁺
Cat. page: 333
Lamp type: 75W | R111 | GU10
Description: Adjustable Ceiling Lights

5 YEAR

IP20
offer



6005
6005/G Grey

E-A⁺⁺
Cat. page: 340
Lamp type: 50W | MR16 | GU10
Description: Wall Lights
(Suitable GU10 LED lamp)

5 YEAR

IP20
offer




6022
6022/AL Aluminium

E-A⁺⁺
Cat. page: 340
Lamp type: 2x50W | MR16 | GU10
Description: Wall Lights
(Suitable GU10 LED lamp)

3 YEAR

IP20
offer



67134A
67134A/W White

B-A⁺⁺
Cat. page: 353
Lamp type: 2x9W | GX53
Description: Wall & Ceiling Lights
(Suitable GX53 LED lamp)

3 YEAR

IP20
offer

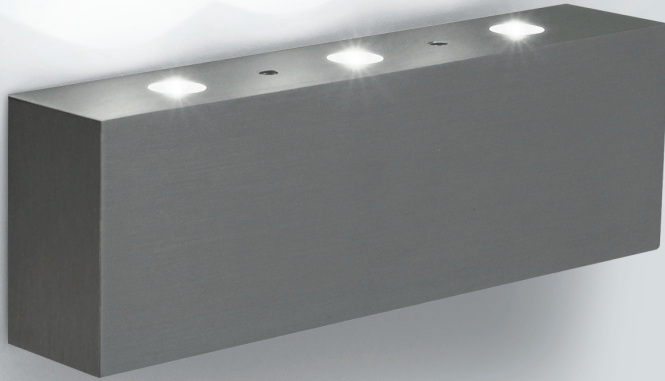


67134E
67134E/G Grey

B-A⁺⁺
Cat. page: 353
Lamp type: 9W | GX53
Description: Wall & Ceiling Lights
(Suitable GX53 LED lamp)

3 YEAR

Wall Decorative



IP20

offer

LED
BUILT IN

60001

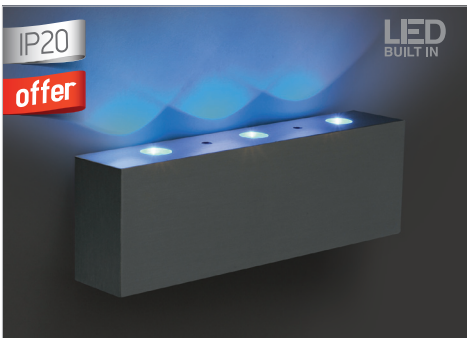
60001/AL/D Natural Alum. Daylight

A-A+

Cat. page: 370

Lamp type: 3x0,2W | LED | 230V

Description: Decorative Wall Lights
(Complete with driver)



IP20

offer

LED
BUILT IN

60001

60001/AL/BL Natural Alum. Blue

Cat. page: 370

Lamp type: 3x0,2W | LED | 230V

Description: Decorative Wall Lights
(Complete with driver)



IP20

offer

LED
BUILT IN

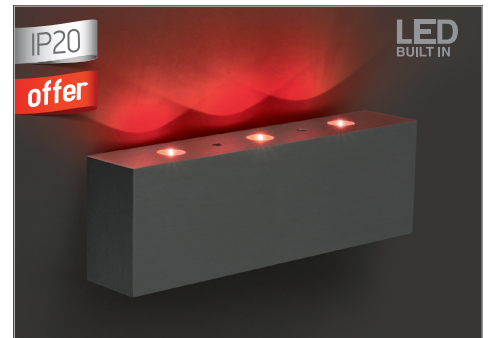
60001

60001/AL/GR Natural Alum. Green

Cat. page: 370

Lamp type: 3x0,2W | LED | 230V

Description: Decorative Wall Lights
(Complete with driver)



IP20

offer

LED
BUILT IN

60001

60001/AL/R Natural Alum. Red

Cat. page: 370

Lamp type: 3x0,2W | LED | 230V

Description: Decorative Wall Lights
(Complete with driver)



IP20

offer

LED
BUILT IN

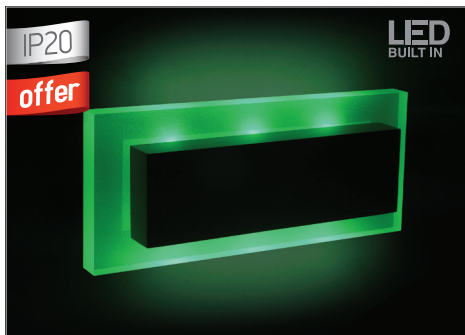
60001

60001/AL/Y Natural Alum. Yellow

Cat. page: 370

Lamp type: 3x0,2W | LED | 230V

Description: Decorative Wall Lights
(Complete with driver)



IP20

offer

LED
BUILT IN

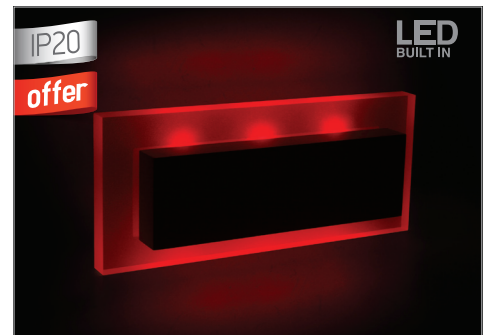
60004

60004/AL/GR Natural Alum. Green

Cat. page: 370

Lamp type: 6x0,2W | LED | 230V

Description: Decorative Wall Lights
(Complete with driver)



IP20

offer

LED
BUILT IN

60004

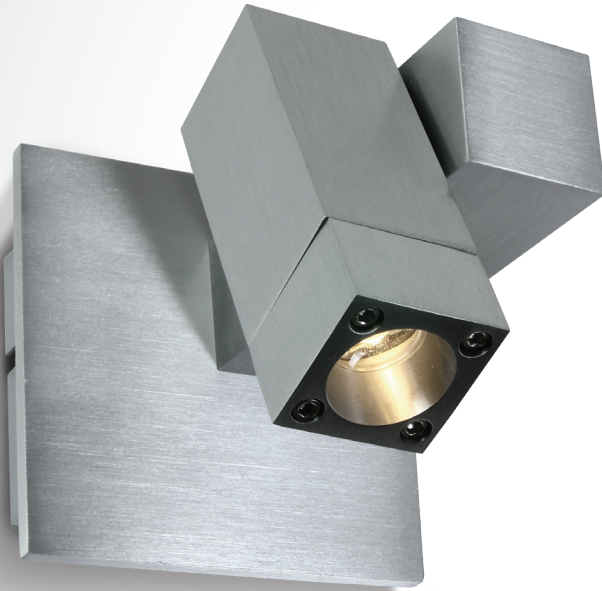
60004/AL/R Natural Alum. Red

Cat. page: 370

Lamp type: 6x0,2W | LED | 230V

Description: Decorative Wall Lights
(Complete with driver)





Indoor Mini Series

IP20

offer

LED
BUILT IN

65102

65102/D Natural Alum. Daylight
65102/W Natural Alum. Warm white

A-A⁺⁺

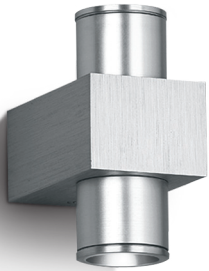
Cat. page: 362
Lamp type: 1W | LED | 100-240V
Description: Indoor Mini Series
(Complete with driver)



IP20

offer

LED
BUILT IN



60008

60008/AL/D Natural Alum. Daylight
60008/AL/BL Natural Alum. Blue

A-A⁺⁺

Cat. page: 362
Lamp type: 2x1W | LED | 100-240V
Description: Indoor Mini Series
(Complete with driver)



IP20

offer

LED
BUILT IN



60008A

60008A/AL/BL Natural Alum. Blue

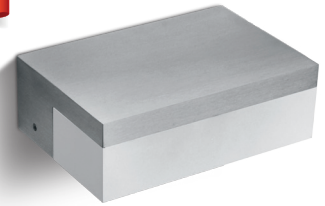
Cat. page: 362
Lamp type: 1W | LED | 100-240V
Description: Indoor Mini Series
(Complete with driver)



IP20

offer

LED
BUILT IN



67332

67332/AL/W Natural Aluminium
Warm white

A-A⁺⁺

Lamp type: 3,5W | LED | 100-240V
Description: Wall Lights
(Complete with driver)



IP20

offer

LED
BUILT IN



60010

60010/AL/D Natural Alum. Daylight

A-A⁺⁺

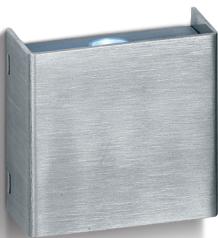
Lamp type: 1W | LED | 230V
Description: Decorative Wall Lights
(Complete with driver)



IP20

offer

LED
BUILT IN



60010

60010/AL/BL Natural Alum. Blue

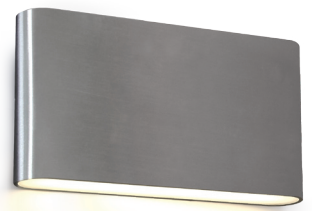
Cat. page: 370
Lamp type: 1W | LED | 230V
Description: Decorative Wall Lights
(Complete with driver)



IP54

offer

LED
BUILT IN



6026A


6026A/AL/W Natural Aluminium
Warm white

A-A⁺⁺

Lamp type: 3x3W | LED | 230V
Description: Outdoor Slim Range
(Complete with driver)



DARK LIGHT
IP54
offer



LED BUILT IN

67256
67256/AL/W Natural Aluminium
Warm white

A-A⁺

Cat. page: 422
Lamp type: 3W | LED | 230V
Description: Indoor/Outdoor Light Points
(Complete with driver)

2 YEAR

IP54
offer



LED BUILT IN


67124
67124/G/W Grey Warm white

A-A⁺

Cat. page: 407
Lamp type: 2x1W | LED | 230V
Description: Outdoor Wall Lights
(Complete with driver)

2 YEAR

IP54
offer



LED BUILT IN

67124
67124/G/BL Grey Blue

Cat. page: 407
Lamp type: 2x1W | LED | 230V
Description: Outdoor Wall Lights
(Complete with driver)

2 YEAR

IP54
offer



LED BUILT IN

67242
67242/G/D Grey Daylight

A-A⁺

Lamp type: 3W | LED
Description: Wall Lights
(Complete with driver)

2 YEAR

IP54
offer



LED BUILT IN

67170
67170/G/BL Grey Blue

Cat. page: 415
Lamp type: 3W | LED | 100-240V
Description: Wall Lights
(Complete with driver)

2 YEAR

IP54
offer



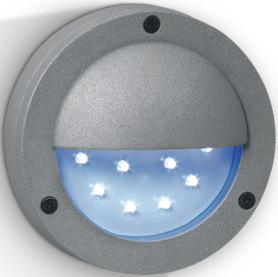
LED BUILT IN

67172
67172/G/BL Grey Blue

Cat. page: 415
Lamp type: 2x3W | LED | 100-240V
Description: Wall Lights
(Complete with driver)

2 YEAR

IP54
offer



LED BUILT IN

67126
67126/G/BL Grey Blue

Cat. page: 419
Lamp type: 1,5W | LED | 230V
Description: Outdoor Surface Round Points
(Complete with driver)

2 YEAR

IP54
offer



LED BUILT IN

67128
67128/G/BL Grey Blue

Cat. page: 419
Lamp type: 1,5W | LED | 230V
Description: Outdoor Surface Round Points
(Complete with driver)

2 YEAR

IP54
offer



LED BUILT IN

67118
67118/G/D Grey Daylight
67118/G/BL Grey Blue

A-A⁺

Cat. page: 420
Lamp type: 1,6W | LED | 230V
Description: Outdoor Surface Square
(Complete with driver)

2 YEAR

IP54
offer



LED BUILT IN

67136A
67136A/G/D Grey Daylight

A-A⁺⁺
Lamp type: 6x1W | LED
Description: Wall Lights
(Complete with driver)

2 YEAR

IP54
offer



LED BUILT IN

67138E
67138E/G/D Grey Daylight

A-A⁺⁺
Lamp type: 6x1W | LED | 230V
Description: Indoor/Outdoor Cylinder
(Complete with driver)

2 YEAR

IP20
offer



LED BUILT IN

12101
12101/AL/D Natural Alum. Daylight
12101/AL/W Natural Alum. Warm white

A-A⁺⁺
Cat. page: 370
Lamp type: 6x0,2W | LED | 230V
Description: Decorative Ceiling Lights
(Complete with driver)

2 YEAR

IP40
offer



LED BUILT IN

12106L
12106L/W/W White Warm white

A-A⁺⁺
Lamp type: 7W | LED | 100-240V
Description: Ceiling Lights
(Complete with driver)

2 YEAR

IP54
offer




LED BUILT IN

67220A
67220A/AL/D Natural Alum. Daylight

A-A⁺⁺
Cat. page: 422
Lamp type: 1W | LED | 100-240V
Description: Indoor/Outdoor Light Points
(Complete with driver)

2 YEAR

IP54
offer



LED BUILT IN

67222A
67222A/AL/D Natural Alum. Daylight

A-A⁺⁺
Lamp type: 1W | LED
Description: Indoor/Outdoor Light Points
(Complete with driver)

2 YEAR

IP54
offer



LED BUILT IN

67138C
67138C/G/D Grey Daylight

A-A⁺⁺
Cat. page: 389
Lamp type: 6x1W | LED | 230V
Description: Indoor/Outdoor Cylinder
(Complete with driver)

2 YEAR

IP54
offer




LED BUILT IN

67138D
67138D/G/D Grey Daylight

A-A⁺⁺
Cat. page: 389
Lamp type: 6x1W | LED | 230V
Description: Indoor/Outdoor Cylinder
(Complete with driver)

2 YEAR

IP20
offer



LED BUILT IN

62401AL
62401AL/D/15 Natural Alum. Daylight
62401AL/W/15 Natural Alum. Warm white

A-A⁺⁺
Cat. page: 362
Lamp type: 4x1W | LED | 100-240V
Description: Ceiling Lights
(Complete with driver)

2 YEAR



Plafa IP44

IP44

offer

62100

62100/MC Brushed Chrome

A-A⁺⁺

Cat. page: 451
Lamp type: 40W | G9 | 100-240V
Description: Plafa
(Suitable G9 LED lamp)



IP20

offer

LED BUILT IN

12220

12220/W White

B-A⁺⁺

Cat. page: 427
Lamp type: 2x20W | E27 | 100-240V
Description: Plafa
(Suitable 9G07B E27 lamp)

5 YEAR

IP20

offer

LED BUILT IN

12220

12220/MC Brushed Chrome

B-A⁺⁺

Cat. page: 427
Lamp type: 2x20W | E27 | 100-240V
Description: Plafa
(Suitable 9G07B E27 lamp)

5 YEAR

DARK LIGHT

IP20

offer

LED BUILT IN

64002

64002/W/C White Cool white

A-A⁺⁺

Cat. page: 453
Lamp type: 7W | LED | 230V
Description: Plafa
(Complete with driver)

2 YEAR

DARK LIGHT

IP20

offer

LED BUILT IN

64002

64002/G/C Grey Cool white

A-A⁺⁺

Cat. page: 453
Lamp type: 7W | LED | 230V
Description: Plafa
(Complete with driver)

2 YEAR

DARK LIGHT

IP20

offer

LED BUILT IN

64004

64004/G/C Grey Cool white

A-A⁺⁺

Cat. page: 453
Lamp type: 16W | LED | 230V
Description: Plafa
(Complete with driver)

2 YEAR

DARK LIGHT

IP20

offer

LED BUILT IN

64006

64006/G/C Grey Cool white

A-A⁺⁺

Cat. page: 453
Lamp type: 24W | LED | 230V
Description: Plafa
(Complete with driver)

2 YEAR

DARK LIGHT
IP20
offer

LED BUILT IN



64008
64008/G/C Grey Cool white

A-A⁺⁺
Cat. page: 453
Lamp type: 8W | LED | 230V
Description: Plafo
(Complete with driver)

2 YEAR

DARK LIGHT
IP20
offer

LED BUILT IN




64010
64010/G/C Grey Cool white

A-A⁺⁺
Cat. page: 454
Lamp type: 17W | LED | 230V
Description: Plafo
(Complete with driver)

2 YEAR

IP20
offer

LED BUILT IN



62102
62102/MC Brushed Chrome

A-A⁺⁺
Cat. page: 428
Lamp type: 17W | SMD LED | 230V
Description: Plafo
(Complete with 700mA driver)

2 YEAR

IP20
offer

LED BUILT IN




62104
62104/MC Brushed Chrome

A-A⁺⁺
Cat. page: 428
Lamp type: 30W | SMD LED | 230V
Description: Plafo
(Complete with 700mA driver)

2 YEAR

IP44
offer




38114C
38114C/C Chrome

B-A⁺⁺
Cat. page: 465
Lamp type: 14W | T5 | 230V
Description: Mirror T5 Range
(Complete with electronic ballast)

2 YEAR

IP44
offer




38121D
38121D/C Chrome

B-A⁺⁺
Cat. page: 465
Lamp type: 21W | T5 | 230V
Description: Mirror T5 Range
(Complete with electronic ballast)

2 YEAR

IP44
offer



38124
38124/C Chrome

B-A⁺⁺
Cat. page: 467
Lamp type: 24W | 2G11 | 230V
Description: Mirror Light
(Complete with electronic ballast)

2 YEAR



Circular T5C

IP20

offer

38140

38140/AL Aluminium

B-A+

Lamp type: 40W | T5C | 2GX13
Description: Retro Pendant
(Complete with electronic ballast)



IP20

offer



63070D

63070D/G Grey

B-A++

Cat. page: 483
Lamp type: 70W | HQI | G12
Description: Pendants
(Complete with electronic ballast)



IP40

offer

LED
BUILT IN



63003

63003/AL/W Natural Alum. Warm white

A-A++

Lamp type: 3W | LED | 100-240V
Description: Mini Pendants LED
(Complete with driver)



IP20

offer

LED
BUILT IN



63002

63002/AL/BL Natural Aluminium Blue

Cat. page: 475
Lamp type: 3W | LED | 100-240V
Description: Mini Pendants LED
(Complete with driver)



IP20

offer



63270

63270/G Grey

B-A++

Cat. page: 483
Lamp type: 2x70W | HQI | G12
Description: Pendants
(Complete with electronic ballast)





Decorative Lights

IP20

offer

65305B

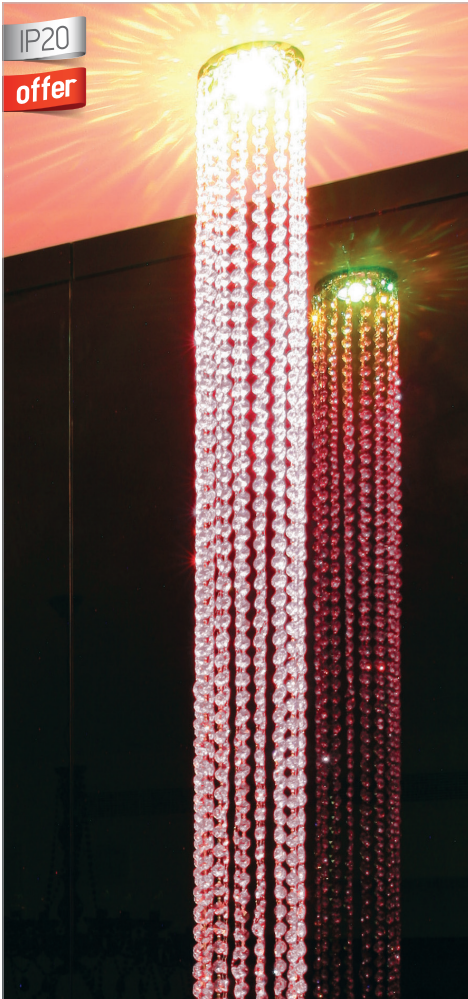
65305B/MC Brushed chrome

E-A⁺⁺

Cat. page: 509

Lamp type: 3x40W | G9 | 100-240V

Description: Decorative Spots



IP20

offer

10105C4

10105C4/C Chrome

E-A⁺⁺

Cat. page: 488

Lamp type: 50W | MR16 | GU5,3

Description: Chrystal Recessed



IP20

offer

10101C4

10101C4/C Chrome

E-A⁺⁺

Cat. page: 487

Lamp type: 10W | G4 | 12V

Description: Chrystal Recessed



IP20

offer

LED
BUILT IN

51105G

51105G/MC/W Brushed chrome

A-A⁺⁺

Lamp type: 10W | MR16 | GU10

Sides: 16 LEDs x 0,06W Warm white

Description: Decorative Recessed LED
(Complete with driver)



Decking Recessed LED



IP44

offer

LED BUILT IN

60012C


60012C/G/D Grey Daylight
60012C/G/W Grey Warm white

A-A+

Lamp type: 1W | LED | 12V AC
Description: Indoor/Outdoor Recessed LED
(Use standard 12V AC transformer)



DARK LIGHT
IP20
offer



LED BUILT IN

68005
68005/G/D Grey Daylight

A-A+

Cat. page: 516
Lamp type: 1W | LED | 350mA
Description: Wall Recessed
(Requires 350mA driver e.g. 89004)

DARK LIGHT
IP20
offer




LED BUILT IN

68005
68005/G/BL Grey Blue

Cat. page: 516
Lamp type: 1W | LED | 350mA
Description: Wall Recessed
(Requires 350mA driver e.g. 89004)

DARK LIGHT
IP20
offer




LED BUILT IN

68005
68005/G/GR Grey Green

Cat. page: 516
Lamp type: 1W | LED | 350mA
Description: Wall Recessed
(Requires 350mA driver e.g. 89004)

DARK LIGHT
IP20
offer




LED BUILT IN

68008
68008/G/D Grey Daylight

A-A+

Cat. page: 516
Lamp type: 1W | LED | 350mA
Description: Wall Recessed
(Requires 350mA driver e.g. 89004)

DARK LIGHT
IP20
offer



LED BUILT IN

68008
68008/G/W Grey Warm white

Cat. page: 516
Lamp type: 1W | LED | 350mA
Description: Wall Recessed
(Requires 350mA driver e.g. 89004)

DARK LIGHT
IP20
offer



LED BUILT IN

68008
68008/G/BL Grey Blue

Cat. page: 516
Lamp type: 1W | LED | 350mA
Description: Wall Recessed
(Requires 350mA driver e.g. 89004)



Wall Recessed

IP20

offer

50104G

50104G/MC/2 Brushed chrome

E-A+

Lamp type: 40W | G9 | 100-240V
Description: Square Wall Recessed



IP54

offer



LED
BUILT IN

68001

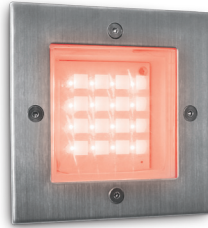
68001/BL S/Steel Blue

Cat. page: 534
Lamp type: 1,6W | LED | 230V
Description: Outdoor Wall Recessed
(Complete with driver)
(Supplied with box for concrete
installation & kit for gypsum installation)



IP54

offer



LED
BUILT IN

68001

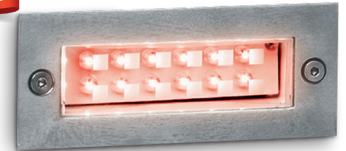
68001/R S/Steel Red

Cat. page: 534
Lamp type: 1,6W | LED | 230V
Description: Outdoor Wall Recessed
(Complete with driver)
(Supplied with box for concrete
installation & kit for gypsum installation)



IP54

offer



LED
BUILT IN

68002

68002/R S/Steel Red

Cat. page: 534
Lamp type: 1,2W | LED | 230V
Description: Outdoor Wall Recessed
(Complete with driver)
(Supplied with box for concrete
installation & kit for gypsum installation)



IP54

offer



LED
BUILT IN

68002

68002/BS/W Brass Warm white

A-A+

Cat. page: 533
Lamp type: 1,2W | LED | 230V
Description: Outdoor Wall Recessed
(Complete with driver)
(Supplied with box for concrete
installation & kit for gypsum installation)





LED Garden Spot

IP54

offer

LED
BUILT IN

67128

67128/C/D Chrome Daylight

E-A⁺⁺

Lamp type: 3x1W | LED | 230V
Description: Garden Spots
(Complete with driver)

3
YEAR

IP44

offer



67050

67050 Stainless Steel 304

E-A⁺⁺

Lamp type: 15W | E27 | 100-240V
Description: Wall Brackets

2
YEAR

IP44

offer



67002

67002 Stainless Steel

E-A⁺⁺

Lamp type: 15W | E27 | 100-240V
Description: Wall Brackets

2
YEAR

IP44

offer



67004

67004 Stainless Steel

E-A⁺⁺

Cat. page: 569
Lamp type: 15W | E27 | 100-240V
Description: Garden Lights

2
YEAR

DARK
LIGHT

IP54

offer

LED
BUILT IN



67246

67246/G/W Grey Warm white

A-A⁺⁺

Lamp type: 4x1W | LED
Description: Dark Light Bollards
(Complete with driver)

2
YEAR

DARK
LIGHT

IP54

offer

LED
BUILT IN



67250

67250/G/D Grey Daylight

A-A⁺⁺

Cat. page: 560
Lamp type: 2x3W | LED | 230V
Description: Dark Light Bollards
(Complete with driver)

2
YEAR

Garden Spots



IP65

offer

7020

7020/G/5 Grey

E-A⁺⁺

Cat. page: 591

Lamp type: 150W | Rx7s 76mm | 230V

Description: Halogen Floodlights
(Suitable 7605L LED lamp)



IP65

offer



38136P

38136P Grey

B-A⁺⁺

Cat. page: 577

Lamp type: 36W | T8 | 230V

Description: T8 Fluo Range
(Complete with electronic ballast)



IP65

offer



38218P

38218P Grey

B-A⁺⁺

Cat. page: 577

Lamp type: 2x18W | T8 | 230V

Description: T8 Fluo Range
(Complete with electronic ballast)



IP65

offer



38236P

38236P Grey

B-A⁺⁺

Cat. page: 577

Lamp type: 2x36W | T8 | 230V

Description: T8 Fluo Range
(Complete with electronic ballast)



IP65

offer



LED
BUILT IN

7022

7022/G/D Grey Daylight

A-A⁺⁺

Cat. page: 592

Lamp type: 15x1W | LED | 100-240V

Description: LED Floodlights
(Complete with driver)



IP54

offer



LED
BUILT IN

7030

7030/AN/C Anthracite Cool white

A-A⁺⁺

Cat. page: 592

Lamp type: 8x1W | LED | 230V

Description: LED Floodlights
(Complete with driver)



IP54

offer



LED
BUILT IN

7048

7048/G/D Grey Daylight

A-A⁺⁺

Cat. page: 595

Lamp type: 12W | COB LED | 230V

Description: LED Sensor Floodlights
(Complete with driver)



IP65
offer



LED BUILT IN

7034B
7034B/G/C Grey Cool white

A-A⁺⁺
Cat. page: 597
Lamp type: 50W | COB LED | 100-240V
Description: COB LED Slim Line
(Complete with driver)

3 YEAR

IP65
offer



LED BUILT IN

7034C
7034C/G/C Grey Cool white

A-A⁺⁺
Cat. page: 597
Lamp type: 70W | COB LED | 100-240V
Description: COB LED Slim Line
(Complete with driver)

3 YEAR

IP65
offer



LED BUILT IN

7034D
7034D/G/C Grey Cool white

A-A⁺⁺
Cat. page: 597
Lamp type: 100W | COB LED | 100-240V
Description: COB LED Slim Line
(Complete with driver)

3 YEAR

IP65
offer



LED BUILT IN

7038
7038/G/D Grey Daylight
7038/G/W Grey Warm white

A-A⁺⁺
Cat. page: 596
Lamp type: 10W | COB LED | 100-240V
Description: LED Floodlights
(Complete with driver)

2 YEAR

IP65
offer



LED BUILT IN

7040
7040/G/D Grey Daylight

A-A⁺⁺
Cat. page: 596
Lamp type: 30W | COB LED | 100-240V
Description: LED Floodlights
(Complete with driver)

2 YEAR

IP65
offer



LED BUILT IN

7040E
7040E/G/D Grey Daylight

A-A⁺⁺
Cat. page: 596
Lamp type: 30W | COB LED | 100-240V
Description: LED Floodlights with sensor
(Complete with driver)

2 YEAR

IP65
offer



LED BUILT IN

7028A
7028A/G/D Grey Daylight

A-A⁺⁺
Cat. page: 594
Lamp type: 10W | COB LED | 100-240V
Description: LED Floodlights
(Complete with driver)

2 YEAR

IP65
offer




LED BUILT IN

7028B
7028B/G/W Grey Warm white

A-A⁺⁺
Cat. page: 594
Lamp type: 30W | COB LED | 100-240V
Description: LED Floodlights
(Complete with driver)

2 YEAR

offer



7028BP
7028BP/G Grey

Cat. page: 594
Description: Stand for 7028B LED Floodlights

IP65
offer

LED
BUILT IN



7028CA
7028CA/B/D Black Daylight

A-A⁺⁺

Cat. page: 601
Lamp type: 10W | SMD 2835 | 230V
Description: AC LED Floodlights

2
YEAR

IP65
offer

LED
BUILT IN



7028CB
7028CB/B/D Black Daylight


A-A⁺⁺

Cat. page: 601
Lamp type: 30W | SMD 2835 | 230V
Description: AC LED Floodlights

2
YEAR

IP65
offer

LED
BUILT IN



70106A
70106A/C Cool white

A-A⁺⁺

Lamp type: 40W | LED | 100-240V
Description: Street Lights
(Complete with driver)

2
YEAR

IP65
offer

LED
BUILT IN



70106D
70106D/C Cool white

A-A⁺⁺

Lamp type: 140W | LED | 100-240V
Description: Street Lights
(Complete with driver)

2
YEAR

IP20
offer



89060WD
89060WD

Cat. page: 633
Description: Output 12V DC, 3channels x 20W,
Total 60W, Dimmable 1-10V
(Uses 1-10V dimmer)

5
YEAR

offer



89036A
89036A /DMX

Description: DMX constant current output
Input 12-48V DC
1-12W@350mA / 3-36W@700mA
350/700mA Dimmable 3 channels

2
YEAR

offer



89902
89902

Description: Daylight control 100-230V
(Includes light sensor, LED panel + cover
wall box, communication cable)
Compatible with 1-10V drivers/ballasts.
Save energy by dimming light when natural
light is present

2
YEAR



G9 Lamp

offer

7106GPH

7106GPH Extra warm white



Cat. page: 653

Lamp type: 60W | G9 | Dimmable | PHILIPS
Description: Halogen Lamps



offer



7105SR

7105SR OSRAM Extra warm white

Cat. page: 657

Lamp type: 50W | GY6,35 | Dimmable
Description: Halogen Lamps



offer



7103LG

7103LG/W Warm white

Cat. page: 654

Lamp type: 2,5W | SMD LED | G9
Description: G9 LED



offer



7350

7350/12 Extra warm white 12°

7350/38 Extra warm white 38°

Cat. page: 659

Lamp type: 50W | MR16 | GU5,3 | Dimmable
Description: Halogen Lamps



offer



7301

7301/GR Green

Cat. page: 668

Lamp type: 1,5W | LED | MR16 | GU5,3
Description: LED Lamps 12V AC



offer



7301

7301/Y Yellow

Cat. page: 668

Lamp type: 1,5W | LED | MR16 | GU5,3
Description: LED Lamps 12V AC



offer



7303

7303/D/30 Daylight

7303/W/30 Warm white

Cat. page: 660

Lamp type: 3W | LED | MR16 | GU5,3
Description: LED Lamps 12V AC



offer



LED

7303G
7303G/D/30 Daylight

Cat. page: 661
Lamp type: 3W | LED | MR16 | GU10
Description: LED Lamps

2
YEAR

offer



LED

7304G
7304G/D/30 Daylight

Cat. page: 661
Lamp type: 3W | LED | MR16 | GU10
Description: LED Lamps

2
YEAR

offer



LED

7305G
7305G/D/15 Daylight

Cat. page: 661
Lamp type: 3x1W | LED | MR16 | GU10
Description: LED Lamps

2
YEAR

offer



LED

7308G
7308G/D/45 Daylight

Cat. page: 662
Lamp type: 7W | LED | MR16 | GU10
Description: LED Lamps

2
YEAR

offer



LED

7308GD
7308GD/D/45 Daylight
7308GD/W/45 Warm white

Cat. page: 664
Lamp type: 7W | MR16 | GU10 | Dimmable
Description: LED Lamps

2
YEAR

offer



HALO

7350G
7350G/38SR Extra warm white

Cat. page: 659
Lamp type: 50W | MR16 | GU10 | Dimmable
Description: OSRAM Halogen Lamps

2
YEAR

offer



HALO

7350G
7350G/GR Green €0,15

Cat. page: 668
Lamp type: 50W | MR16 | GU10 | Dimmable
Description: Halogen Lamps

2
YEAR

offer



HALO

7350G
7350G/Y Yellow

Cat. page: 668
Lamp type: 50W | MR16 | GU10 | Dimmable
Description: Halogen Lamps

2
YEAR

offer



LED

7301G
7301G/Y Yellow

Lamp type: 1,5W | LED | MR16 | GU10
Description: LED Lamps

2
YEAR



MR16 LED

offer

7305M

7305M/D/15 Daylight 15°
7305M/D/30 Daylight 30°

Cat. page: 669
 Lamp type: 3x1W | LED | 350mA
 Description: MR16 LED
 (Requires 350mA driver e.g 89004)
 (LED module suitable for MR16 fittings)



offer



7512D

7512D/D/30 Daylight
7512D/W/30 Warm white

Cat. page: 678
 Lamp type: 12x1W | CREE LED | R111 | 350mA
 Description: LED Lamps
 (Requires 350mA driver e.g. 89015)



offer



7524BD

7524BD/W/30 Warm white

Cat. page: 678
 Lamp type: 12x2W | LED | R111 | 500mA
 Description: LED Lamps
 (Requires 500mA driver e.g. 89030C)



offer



7524D

7524D/W/30 Warm white

Cat. page: 678
 Lamp type: 12x2W | CREE LED | R111 | 500mA
 Description: LED Lamps
 (Requires 500mA driver e.g. 89030C)



offer



7312M

7312M/D/30 Daylight

Cat. page: 669
 Lamp type: 4x3W | CREE LED | 700mA
 Description: MR16 LED
 (Requires 700mA driver e.g. 89015A)
 (LED module suitable for MR16 fittings)



offer



10106NA

10106NA/W/D/35 Daylight

Cat. page: 677
 Lamp type: 6x1W@350mA / 6x3W@700mA | R111
 Description: LED Lamps
 (Requires 350mA or 700mA driver e.g. 89030A)



offer



10106NA

10106NA/AL/D/35 Daylight
10106NA/AL/W/35 Warm white

Cat. page: 677
 Lamp type: 6x1W@350mA / 6x3W@700mA | R111
 Description: LED Lamps
 (Requires 350mA or 700mA driver e.g. 89030A)



offer



7510

7510/24

Lamp type: 100W | R111 | G53 | Dimmable
Description: Halogen Lamps 12V



offer



7510R

7510R/D/45 Daylight
7510R/W/45 Warm white

Cat. page: 676
Lamp type: 10W | COB LED | R111 | G53
Description: LED Lamps



offer



9R27A

9R27A/W/E Warm white

Lamp type: 9x3W | PAR38 | E27
Description: LED Lamps



IP65

offer



9R23

9R23/BL/E Blue

Cat. page: 671
Lamp type: 23W | PAR38 | E27
Description: Fluo Lamps



IP65

offer



9R23

9R23/R/E Red

Cat. page: 671
Lamp type: 23W | PAR38 | E27
Description: Fluo Lamps



offer



9S13

9S13/GR/E Green

Cat. page: 692
Lamp type: 13W | E27 | 230V
Description: Fluo Lamps



offer



9F01

9F01/D Daylight

Cat. page: 682
Lamp type: 1,5W | LED | GX53
Description: LED Lamps



offer



9F01

9F01/W Warm white

Cat. page: 682
Lamp type: 1,5W | LED | GX53
Description: LED Lamps



offer



9F01

9F01/BL Blue

Cat. page: 682
Lamp type: 1,5W | LED | GX53
Description: LED Lamps



offer



9G01

9G01/W/B Warm White

Cat. page: 691

Lamp type: 0,5W | SMD LED | G45 | B22

Description: LED Ball Lamps



offer



9G01

9G01/BL/E Blue
9G01/GR/E Green
9G01/R/E Red

Cat. page: 691

Lamp type: 0,5W | SMD LED | G45 | E27

Description: LED Ball Lamps



offer



9G01

9G01/BL/B Blue
9G01/GR/B Green
9G01/R/B Red

Cat. page: 691

Lamp type: 0,5W | SMD LED | G45 | B22

Description: LED Ball Lamps



offer



9C04A

9C04A/W/SE Warm white

Cat. page: 683

Lamp type: 4W | LED | E14

Description: LED Decorative Candles



offer



7604

7604/C Cool white

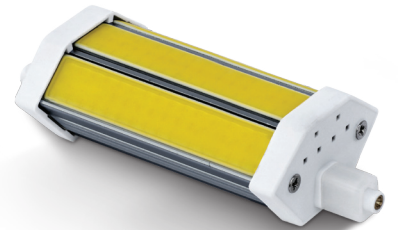
Cat. page: 680

Lamp type: 4,5W | COB LED | R7s | 78mm

Description: LED Lamps
(Halogen 78mm replacement)



offer



7610A

7610A/C Cool white

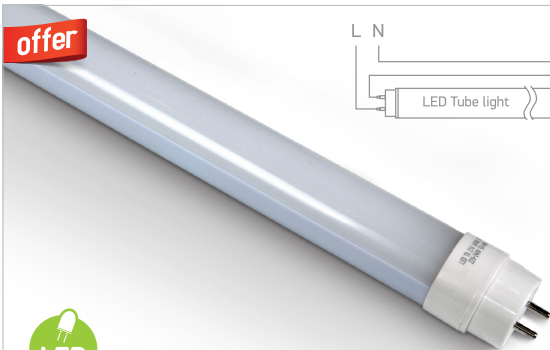
Cat. page: 680

Lamp type: 10W | COB LED | R7s | 135mm

Description: LED Lamps
(150W HQI replacement)



offer



9021LB

9021LB/W Warm white

Cat. page: 694

Lamp type: 21W | T8 | Non Rotating | 1200mm

Description: T8 LED Tube



offer



9026LA

9026LA/W Warm white

Cat. page: 694

Lamp type: 25W | T8 | Rotating | 1500mm

Description: T8 LED Tube



OSRAM PL Lamp



offer

8213

8213/W/4SR Warm white

Cat. page: 697

Lamp type: 13W | G24q | 4pins

Description: OSRAM PL Lamps
(Requires ballast)



offer



8218

8218/D/4SR Daylight

Cat. page: 697

Lamp type: 18W | G24q | 4pins

Description: OSRAM PL Lamps
(Requires ballast)



offer



8226

8226/W/4SR Warm white

Cat. page: 697

Lamp type: 26W | G24q | 4pins

Description: OSRAM PL Lamps
(Requires ballast)



offer



9465

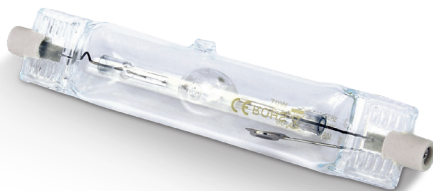
9465/W/E Warm white

Lamp type: 65W | E27

Description: U Tube CFL Lamps



offer



8007

8007/W Warm white

Cat. page: 698

Lamp type: 70W | Rx7s | Metal halide

Description: HQI Lamps
(Requires ballast)



offer



8015

8015/W Warm white

Cat. page: 698

Lamp type: 150W | Rx7s | Metal halide

Description: HQI Lamps
(Requires ballast)





Accessories

offer

LED
BUILT IN

70038

70038

A-A⁺⁺

Cat. page: 706

Type: COB LED | Wardrobe | Magnet portable light

Description: LED Handy Lights

(3xAAA Batteries included)



offer

LED
BUILT IN

70036

70036

A-A⁺⁺

Cat. page: 706

Type: COB LED | Wardrobe | Magnet portable light

Description: LED Handy Lights

(3xAAA Batteries included)



offer

LED
BUILT IN

70026
70026

Cat. page: 704
Type: LED Rechargeable Torch | BS Socket
Description: LED Night Lights

2
YEAR

offer

LED
BUILT IN

70028
70028

Cat. page: 704
Type: LED Rechargeable Torch | EU Socket
Description: LED Night Lights

2
YEAR

offer

LED
BUILT IN

70032
70032 Daylight

Cat. page: 706
Type: 1W | LED | USB
Description: USB LED Lights

2
YEAR



offer

060010

060010

Cat. page: 710
Type: A5 Note Pad
Description: Advertising & Marketing



offer

060012

060012

Cat. page: 710
Type: Small Plastic Bag
Description: Advertising & Marketing



offer

060014

060014

Cat. page: 710
Type: Large Plastic Bag
Description: Advertising & Marketing



offer

060016

060016 Switch to one light

Cat. page: 709
Type: Sticker | 30x9cm
Description: Advertising & Marketing



offer

060018

060018 One light available here

Cat. page: 709
Type: Sticker | 30x9cm
Description: Advertising & Marketing



offer

060020

060020 One Light Logo Sticker

Cat. page: 709
Type: Sticker | 14x12cm
Description: Advertising & Marketing



offer

060020A

060020A One Light Logo Sticker

Cat. page: 709
Type: Sticker | 34x29cm
Description: Advertising & Marketing



offer

060026 Small
060027 Medium
060028 Large

Cat. page: 710
Type: T-Shirt
Description: Advertising & Marketing



offer

060029 XLarge
060030 XXLarge

Cat. page: 710
Type: T-Shirt
Description: Advertising & Marketing



www.1-light.eu



Hunilux Kft.

H-1116 Budapest,

Hunyadi János út 16.

t. / +36 1 218 2285

e. / hunilux@hunilux.hu

w. / www.hunilux.hu



ONE Light Ltd

47 Kennedy Avenue

P.O.Box 22287

1520, Nicosia

CYPRUS

t. / +357 22450833

f. / +357 22497192

e. / one@1-light.eu

w. / www.1-light.eu