



FUTURE LINE LED

LED GO!



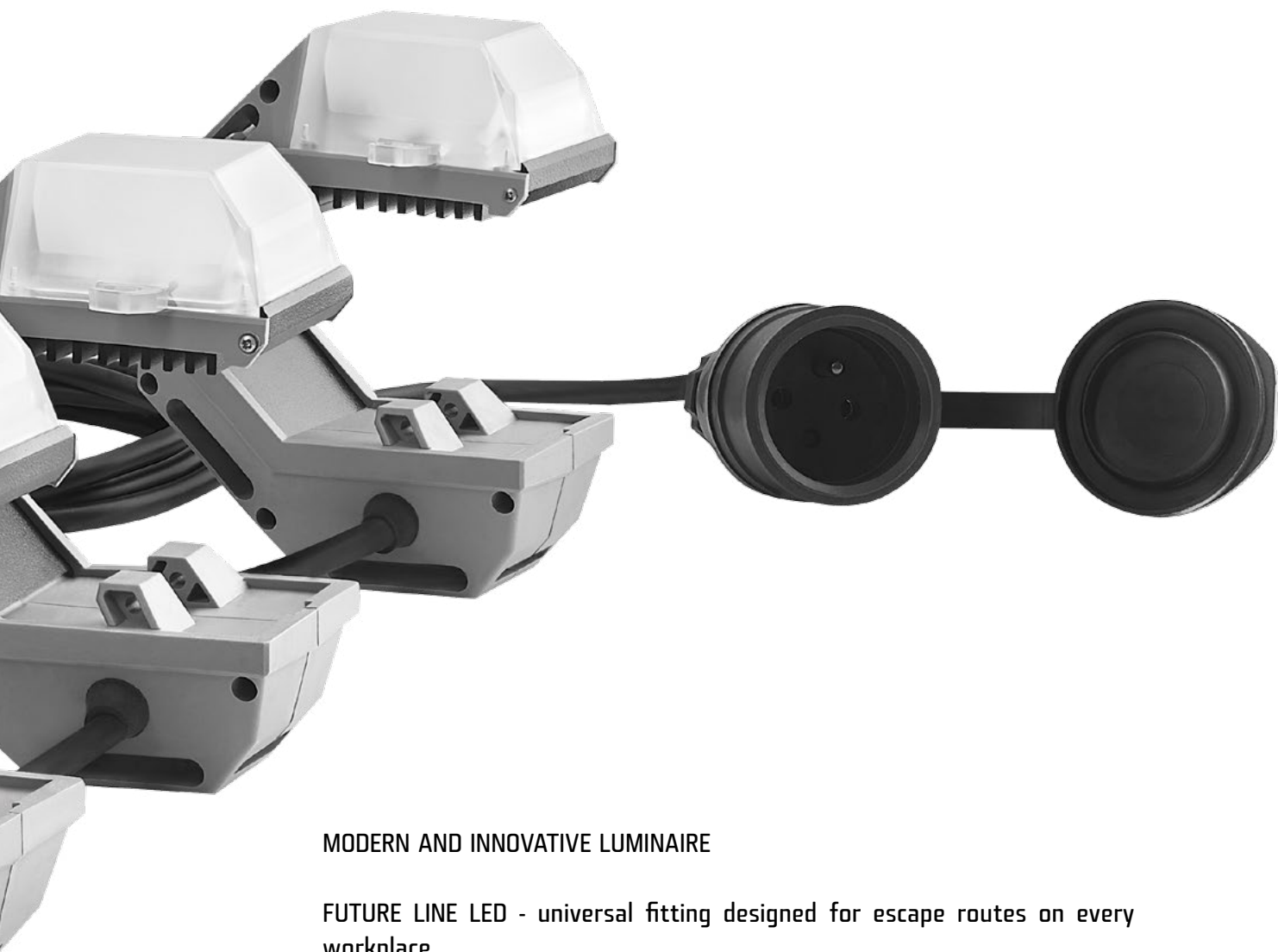
FUTURE LINE LED

Choose
Your Way!





WATCH THE MOVIE:
[FUTURELINE.LENALIGHTING.PL/EN](https://futureline.lenalighting.pl/en)



MODERN AND INNOVATIVE LUMINAIRE

FUTURE LINE LED - universal fitting designed for escape routes on every workplace.

- ▼ Unique shape enables fast installation on site in every, even untypical place.
- ▼ Materials used, such as aluminum and impact resistant plastic, give warranty of operation in extreme conditions.
- ▼ Modern LED system ensures high luminous efficacy with low energy consumption.

The luminaire has been developed in close cooperation with construction and refurbishment companies and constitutes the answer to their needs.

KEY ADVANTAGES



EASY AND UNIVERSAL MOUNTING

Minimises the time needed to set up the lights. A wide scope of mounting options in all conditions is a major feature of FUTURE LINE LED.



SAME AMOUNT OF LIGHT WITH LESS LIGHT UNITS

Means shorter installation times, generating further savings. FUTURE LINE LED are 7times more efficient in terms of light output than bulb lamps.



ENERGY EFFICIENT

Contributes to a significant financial saving. The LED technology generates a 50 - 70% energy saving whilst delivering same illumination levels.



POSSIBILITY OF COMBINING SINGLE UNITS INTO CHAINS

Possible through combining single chains into light lines of any length up to 120 cm containing up to 40 light units.



HANDY AND EASY TO MOVE

The FUTURE LINE LED luminaire is exceptionally easy to mount and remove.



FUTURE LINE LED LUMINAIRE IMPACT RESISTANCE AND DURABILITY

Eliminates the risk of damage or destruction when subject to impact, which is inevitable during construction and refurbishment works.



ERGONOMIC AND SAFE OPERATION

The FUTURE LINE LED luminaire does not heat up - thus there is no risk of burning as is the case for traditional bulbs.



EXTENDED LIGHT SOURCE LIFETIME

Extended light source lifetime means lower maintenance and replacement costs. FUTURE LINE LED lifespan of up to 50.000h significantly exceeds that of a traditional bulb.



A 5 YEAR GUARANTEE

We offer 5 year guarantee for availability of components. It gives you comfort and safety that the product will be in use for many years to come.



INTELLIGENT SOLUTIONS

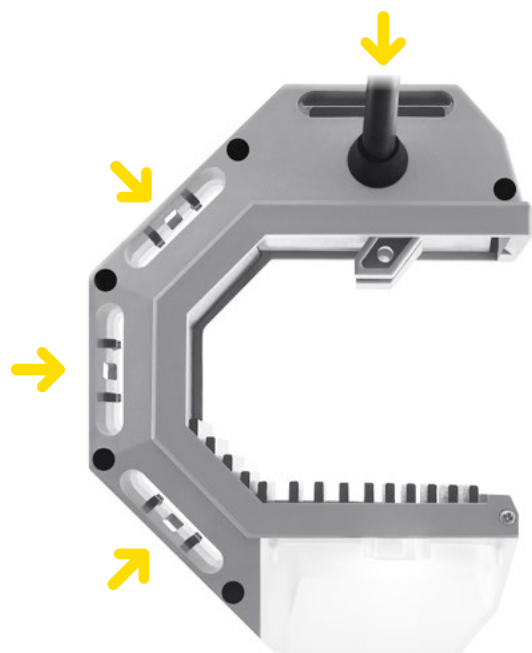


FUTURE LINE LED - luminaire of multiple applications.

The design permits luminaires assembly in different conditions and locations.

+ ASSEMBLY WITH NAILS OR SCREWS

FUTURE LINE LED offers easy mounting to any surface by using screws or nails. The luminaire has four threaded mounting holes, which can be used to set it at the required angle and adjust the illumination angle.





ASSEMBLY WITHOUT ADDITIONAL ACCESSORIES AND RIGID INSTALLATION

The shape of the luminaire makes it possible to mount it without additional accessories. The luminaire may be suspended from scaffolding, door, ladder or a door handle. Even when using this mounting method it is possible to adjust the beam angle.



+ ASSEMBLY WITH ZIP STRAP

FUTURE LINE LED has four holes for zip-straps (included). Therefore it can be mounted to various elements, such as scaffolding, pipes, poles.



+ MAGNET MOUNTING

Magnet, an additional accessory, enables assembly on metal surfaces.



+ LIGHT CHAINS

Single FUTURE LINE LED chain with a standard length of 11,5m, contains 4 light units. It can be quickly and easily combined into lines up to 120m and 40 light units.

FUTURE LINE LED combined into light lines are ideal for illuminating larger surfaces, circulation spaces or stairwells. Suspended or mounted vertically or horizontally, may be free-hanging or stabilised using the power cable whilst maintaining the option to adjust the beam angle.



ENERGY SAVINGS

The FUTURE LINE LED joins maximum efficiency, versatility, extraordinary durability and economy.

The **LED GO!** technology designed by Lena Lighting and applied in FUTURE LINE LED ensures maximum luminous flux with minimum energy consumption. Thanks to the exceptional efficiency of the **LED GO!** diodes a single 8W luminaire generates luminous flux of 680 lumens. Each luminaire on a light chain is independent, thus a failure of one light unit does not impact the operation of the others.



The **LED GO!** diodes means a life span of ~ 50 000 hours (~ 6 years of continuous operation) and 5 years guarantee of the availability of components.*

Future Line was designed from scratch for the modern **LED GO!** system. The electronics integrated with LEDs provide high impact resistance and the aluminum heat sink guarantees low operating temperatures. All this contributes to maximum performance and high lifetime of the diodes.

* Detailed warranty terms at www.lenalighting.pl

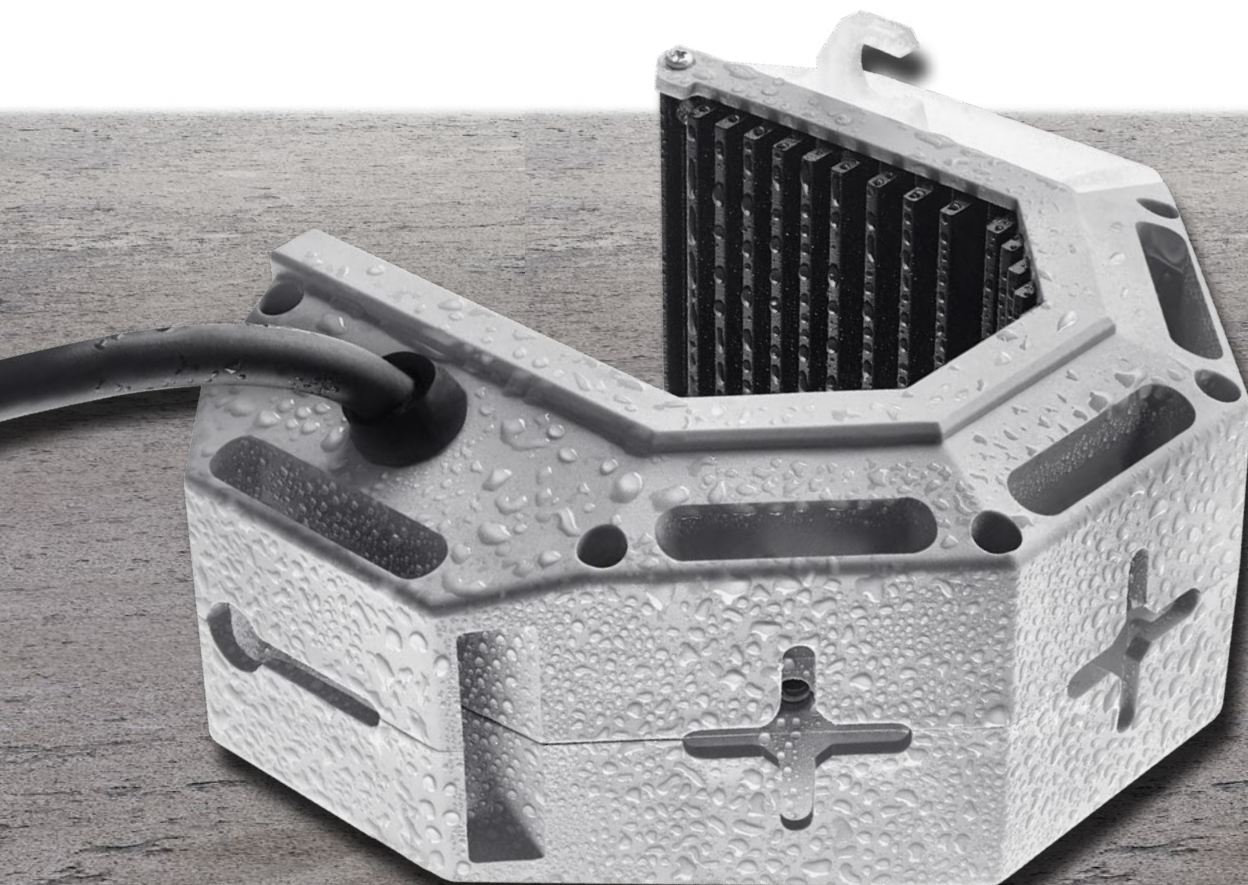


RESISTANCE AND SEALITY

UP TO IK09 IMPACT RESISTANCE AND IP 54 INGRESS PROTECTION CLASS.

The ribbed body of the luminaire, made out of high resistance polypropylene copolymer, provides exceptional impact resistance (IK09) and other mechanical factors, which are so common at a construction site. Such unique combination of state of the art construction and materials, ideally protects the optic system and guarantees the required shock absorption. Thus even after a fall onto a concrete surface from a significant height, the luminaire continues to operate without the need to replace light sources.

High ingress protection of the unit (IP54), prevents penetration by dust and heavy rain falling at any angle.





IP54



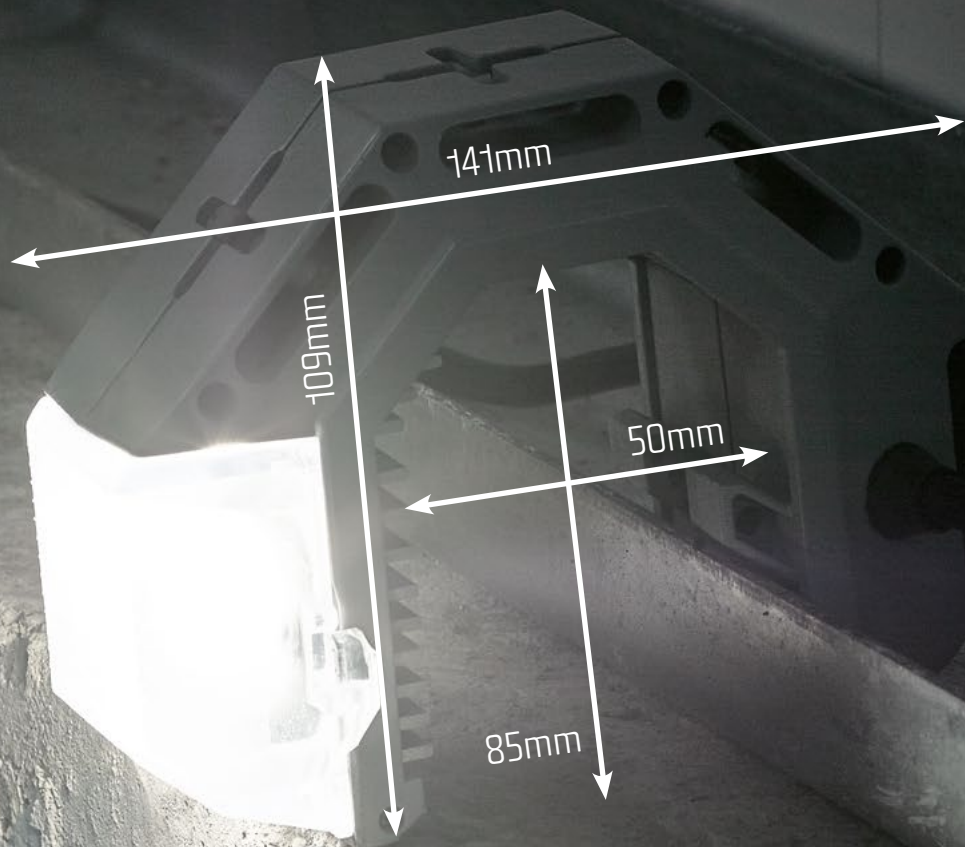
IK09

ERGONOMY AND CONVENIENCE

FUTURE LINE LED is a state of the art luminaire for professional site illumination. The innovative body design provides a number of advantages to users. Durable polypropylene copolymer, together with a rigid aluminium core, deliver not only maximum mechanical resistance, but also ensures its low weight.

Available versions: 3x8W, 4x8W





300g

FUTURE LINE LED weighs just 300g.

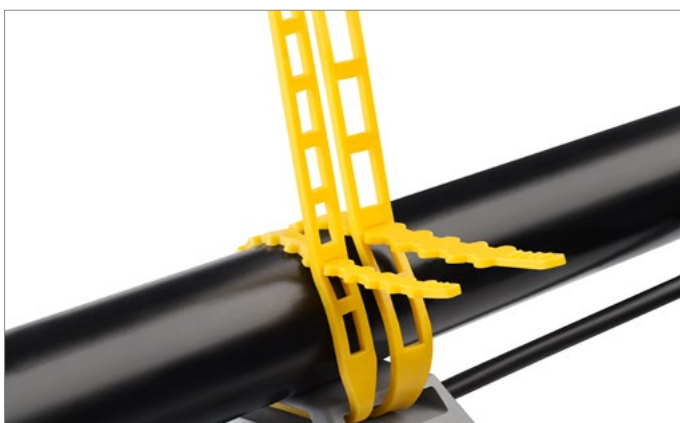
Compact size means easy handling.



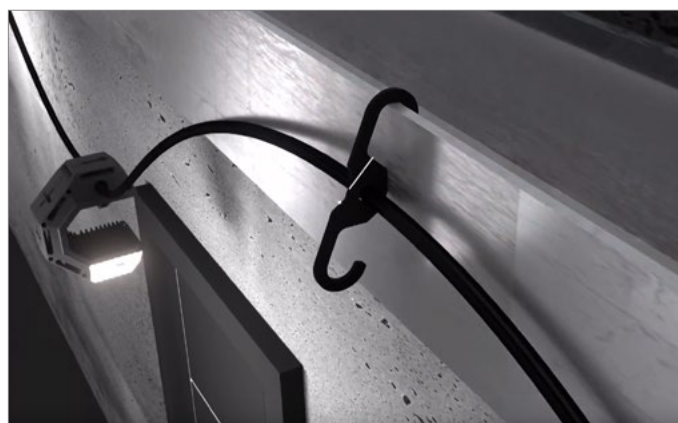
AVAILABLE VERSIONS

index	power [W]	power supply [V]	IP	total luminous flux [lm]	cable length [m]	plug type	sockets	protection class	magnet
248542	4x8	220-240	54/44	4x680	11,5	standard 2-PIN	standard 2-PIN	II	-
248573	3x8	220-240	54/44	3x680	9	standard 2-PIN	standard 2-PIN	II	-
248559	4x8	220-240	54/44	4x680	11,5	standard 2-PIN	standard 2-PIN	II	+
248566	3x8	220-240	54/44	3x680	9	standard 2-PIN	standard 2-PIN	II	+

INCLUDED:



Zip-strap (set: 3 or 4 pcs)
Versatile & safe mounting options.



Double-sided hook (set: 3 or 4 pcs)
Versatile mounting options.

INCLUDED WITH SELECTED VERSIONS:



Magnet (set: 3 or 4 pcs)
For rapid mounting on metal surfaces.

Photos presented in the brochure are illustrative and may differ from a real product appearance.
Manufacturer reserves its right to change technical data of product without prior information. Date of publication: 05.10.2017

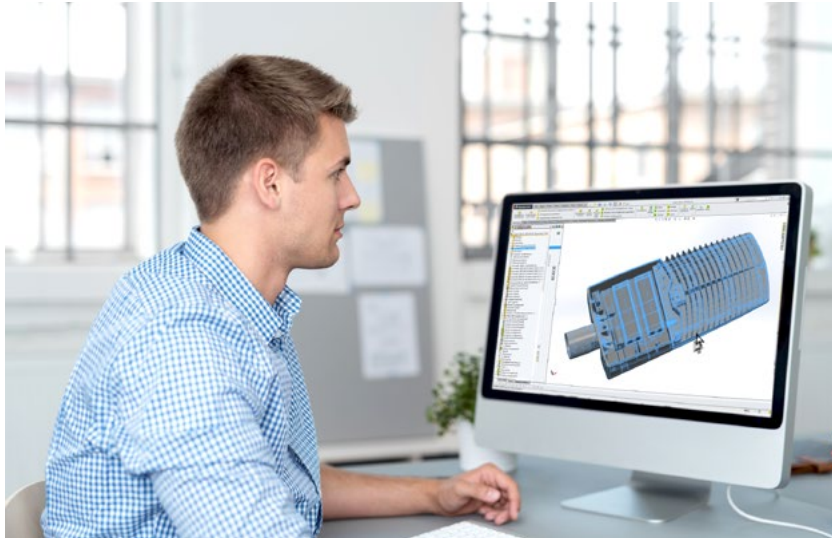




For years Lena Lighting S.A. has been a leading producer of professional, investment light fittings. Thanks to the cooperation with biggest electro-technical wholesalers and our own network of sales representatives, Lena Lighting's investment light fittings can be found wherever the highest quality of lighting is required. By developing the exports to 70 countries all over the world, Lena Lighting S.A. has achieved the position of an unquestionable leader among Polish exporters of professional investment illumination. The main customers of the Company include the countries of Western, Central and Eastern Europe.

One of the success foundations of Lena Lighting is high quality of manufactured fittings. Since 2005, the Company has been operating within the ISO 9001:2000 system. Our specialists from the Research and Development Department are constantly working on increasing of the quality standards. Our fittings meet very high international standards, which results in their reliability, long life cycle and energy-efficiency. Electronic systems increase the energy efficiency, at the same time improving the illumination quality. The use of energy-efficient fluorescent lamps and LEDs light sources gives us significant economic and environmental benefits.







FUTURE LINE LED **LED GO!**

Lena Lighting S.A.
ul. Kornicka 52, 63-000 Sroda Wlkp.
tel. +48 (61) 28 60 300
office@lenalighting.pl
www.lenalighting.pl

 [FUTURELINE.LENALIGHTING.PL/EN](https://www.lenalighting.pl/en)