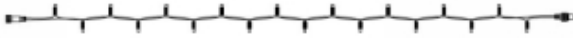


2022-5-2 | Data subject to change without notice

PS230 | String | 6m | White Wire | 3000K WW

Article number: 011-228



The Pro system Modular 230V is a distinctive system in the professional LED world. The system has countless possibilities when it comes to creating its own lighting design.

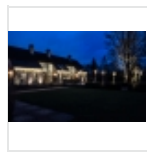
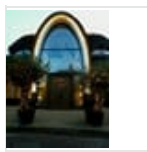
Whether it is about decorating a house, restaurant, store, shop window, facade or trees, the system offers a solution for everything!

Features:

- IP65, for outdoor use
- High-quality material composition, for a long service life and more ease of use
- Matching light colors in the Rope Light and 3D Motifs range

Specifications

| | | | | | |
|-------------------|--------------|-----------------------|----------|--------------------|--------------|
| Type | Light string | LED quantity in total | 60 | Power Cable | Not included |
| Input | 230V | LED distance | 10 cm | Length | 6 meter |
| Power | 4,6 Watt | Nr. of strings | 1 | Material | Rubber |
| (Wire) color | White | Connectable | Yes | Carton quantity | 10 |
| Color temperature | 3000K | End caps | Included | Certification mark | CE, RoHS |
| Light color | Warm white | IP rate | IP65 | Warranty | 2 years |



Line Drawings

