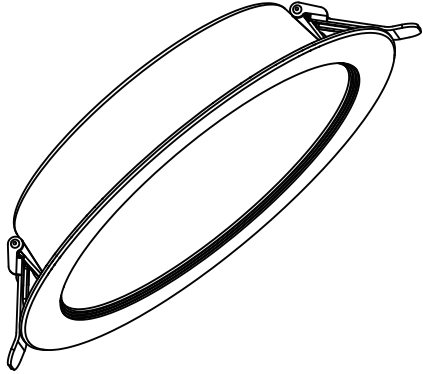
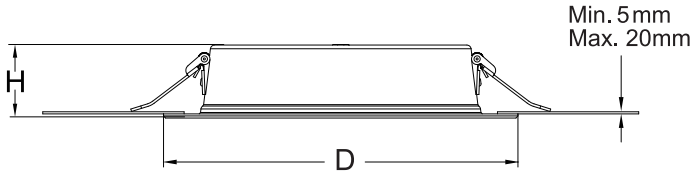


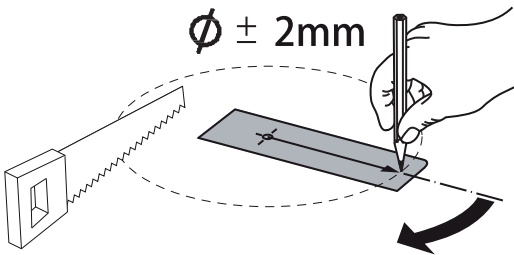
LED Downlight Compact Ecomax

Item Code	CCT	kg
540001290900	3000K	0.098Kg
540001291000	4000K	0.098Kg
540001291100	3000K	0.138Kg
540001291200	4000K	0.138Kg
540001291300	3000K	0.201Kg
540001291400	4000K	0.201Kg
540001291500	3000K	0.321Kg
540001291600	4000K	0.321Kg

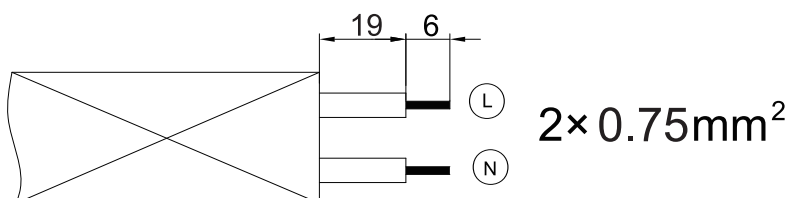
Type	H	D
LED DL CO-E RD100-9W	115mm	35mm
LED DL CO-E RD125-14W	140mm	35mm
LED DL CO-E RD150-18W	170mm	35mm
LED DL CO-E RD200-24W	220mm	35mm

①

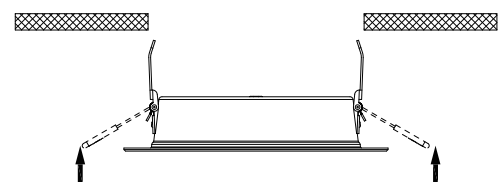


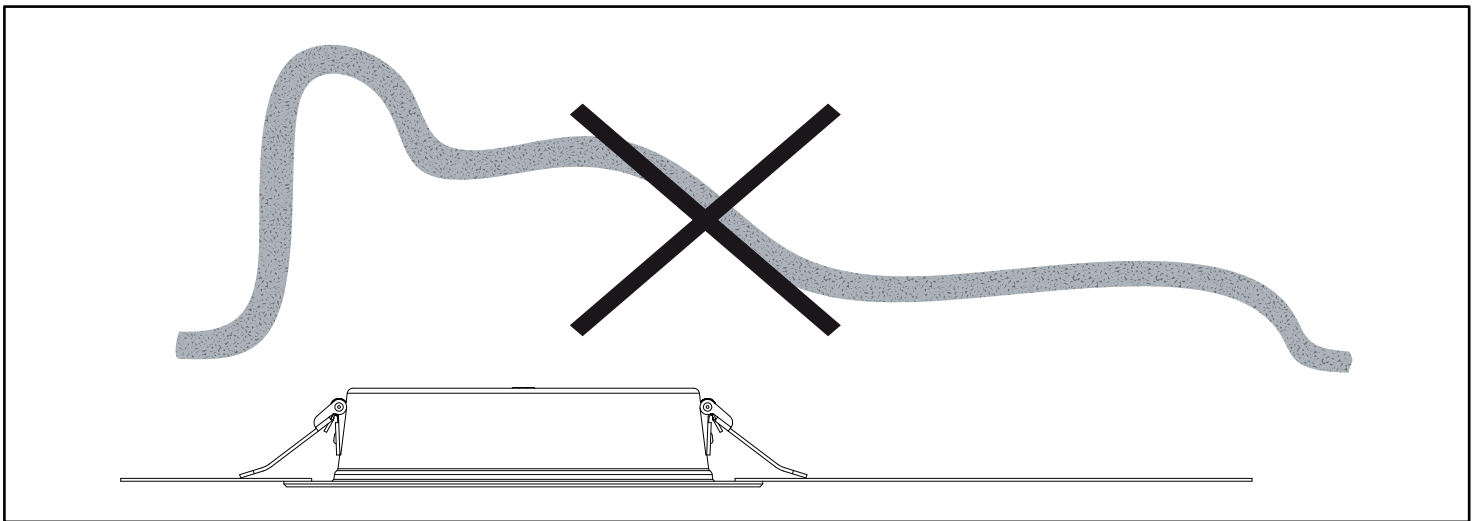
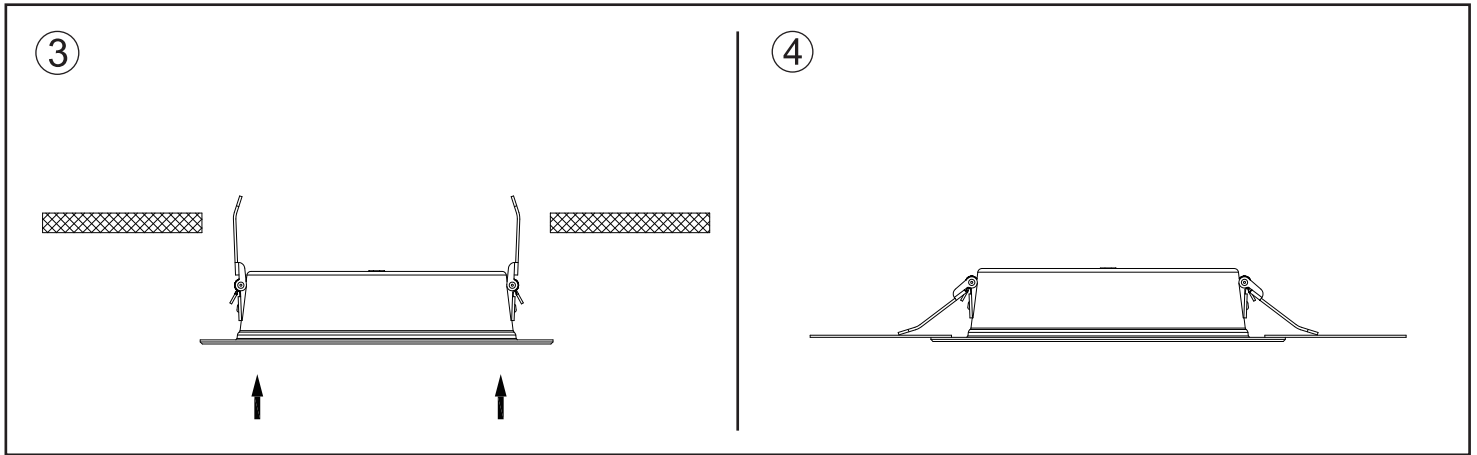
Type	Cut-out Φ
LED DL CO-E RD100-9W	85~105mm
LED DL CO-E RD125-14W	110~130mm
LED DL CO-E RD150-18W	140~160mm
LED DL CO-E RD200-24W	195~205mm

A suitable size of outlet box with internal 2-way terminal blocks which conform to EN60998-2-1 or EN60998-2-2 must be used, more specification about terminal block as below:
Screw terminal block with box, 450V 5A, 0.75-2.5mm².



②





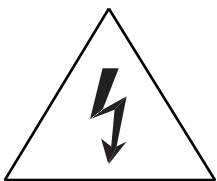
The external flexible cable or cord of this luminaire cannot be replaced; If the cord is damaged, the luminaire shall be destroyed.

Terminal block not included. Installation may require advice from a qualified person.

Input Voltage: 220V-240V~50/60Hz

Luminaires not suitable for covering with thermally insulating material.

Caution: Any operation is forbidden while power is on.



For non-replaceable light sources:

The light source of this luminaire is not replaced; When the light source its end of life the whole luminaire shall be replaced.

This product contains a light source of energy efficiency class <F>.

