

2022-11-7 | Data subject to change without notice

PS230 | String | 6m | White Wire | 6500K CW

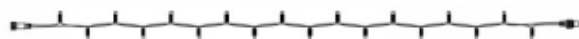
Article number: 011-221

The Pro system Modular 230V is a distinctive system in the professional LED world. The system has countless possibilities when it comes to creating its own lighting design.

Whether it is about decorating a house, restaurant, store, shop window, facade or trees, the system offers a solution for everything!

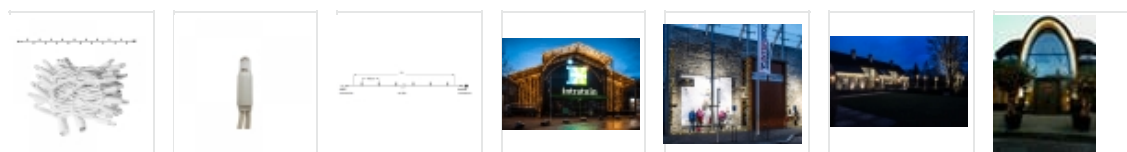
Features:

- IP65, for outdoor use
- High-quality material composition, for a long service life and more ease of use
- Matching light colors in the Rope Light and 3D Motifs range



Specifications

Type	Light string	LED quantity in total	60	Power Cable	Not included
Input	230V	LED distance	10 cm	Length	6 meter
Power	4,6 Watt	Nr. of strings	1	Material	Rubber
(Wire) color	White	Connectable	Yes	Carton quantity	10
Color temperature	6500K	End caps	Included	Certification mark	CE, RoHS
Light color	Cold white	IP rate	IP65	Warranty	2 years



Line Drawings

