



TUBOLED FOOD

Typology

T8 LED tubes for special applications.

Features

Products with calibrated spectrums to improve visual perception of goods in different product sectors.

Material

White glass body, plastic caps.

Applications

The retail food, baked goods and hospitality industries.

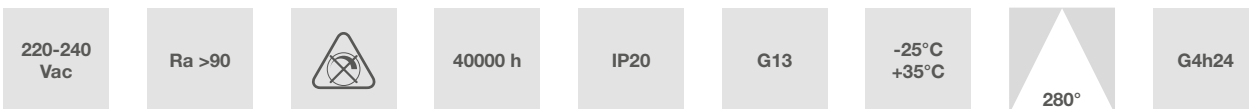
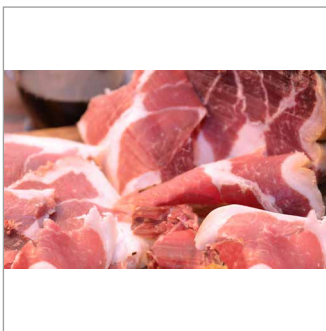
Usage information

Do not use with dimmer.

In case fluorescent tubes must be replaced, follow the simple assembly instructions indicated.

See instructions on the website.

Do not use in in-series installations.



Characteristic data

Power	20 W	Beam	280°	Dimmable	No	Input	220-240 Vac
Base	G13	IP	20	Flux	1450 lm	PF	0,92
Tc	2500 K	Ra	>90	LED Warranty	G4h24		

Dimensional characteristics



L	1212 mm
Ø	29 mm

Lighting and photometric features

Beam opening	280°
Flux	1450 lm
CCT nominal colour temperature	2500 K
Colour of the light	Warm light
Colour rendering index	>90
Lifespan	40000 h
LED lifespan	L70B50
Trigger time	<0,2 s
Heating time up to 60% of full efficiency	Instant Full Light
Mercury	0 mg

Electrical characteristics

Rated power	20 W
Input voltage	220-240 Vac
Frequency	50 Hz
Dimmable	No
Power factor (PF)	0,92
Input current	0.92 A
Weighted energy consumption	20 kWh/1000h
Number of cycles	100000
Operating temperature	-25°C / +35°C
Operating position	360°

Photometry

EuLumDat file on the site

LED Warranty

G4h24	Full Guarantee 4 years (24h/24h) Without limitations on the duration of use for the first year, provided the observance of the installation conditions.
-------	---

Standards and Directives

2009/125/EC, 244/2009, 859/2009, 1194/2012, 2015/1428, 2010/30/EU, 874/2012, 2011/65/EU, 2012/19/EU, 2014/30/EU, 2014/35/EU, 2015/863	CEI EN 62031/A1/A2:2015
CEI EN 55015:2020	CEI EN 62471:2010
CEI EN 60968:2016	IEC TR 62471-2:2009
CEI EN 61000-3-2:2019	CEI EN 62560:2013
CEI EN 61000-3-3:2014	CEI EN 62560/A1:2017
CEI EN 61547:2010	CEI 34-141:2014
CEI EN 62031:2009	

Logistics data

Barcode single item	8011905938994
Number of pieces multiple pack	25
Barcode multiple pack	8011905939144