

2023-10-5 | Data subject to change without notice



PS230 | Icicle Light | 2x0,8m | Black Wire | 6500K CW

Article number: 007-050

The Pro system Modular 230V is a distinctive system in the professional LED world. The system has countless possibilities when it comes to creating its own lighting design.

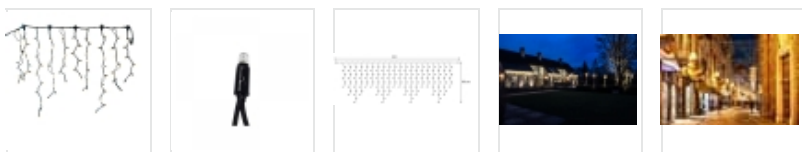
Whether it is about decorating a house, restaurant, store, shop window, facade or trees, the system offers a solution for everything!

Features:

- IP65, for outdoor use
- High-quality material composition, for a long service life and more ease of use
- Matching light colors in the Rope Light and 3D Motifs range
- Max. 50 meters in one single length. Connect more lengths to one power cable? Then work with dividers to create multiple lengths of max. 50 meters each.

Specifications

Type	Icicle Light	LED quantity per string	6-8-10	Power Cable	Not included
Input	230V	Nr. of strings	20	Material	Rubber
Power	11 Watt	Connectable	Yes	Carton quantity	10
(Wire) color	Black	End caps	Not included	Certification mark	CE, RoHS
Color temperature	6500K	IP rate	IP65	Warranty	2 years
Light color	Cold white	Length	2 meter		
LED quantity in total	152	Height	80 cm		



Line Drawings

