
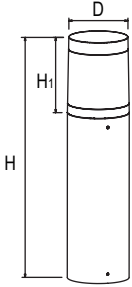






LED Bollard Leo

Item Code	CCT	kg	
703000005600	3000K/4000K	1.15Kg	
703000005700	3000K/4000K	1.80Kg	
703000005800	3000K/4000K	2.30Kg	
703000005900	3000K/4000K	1.15Kg	
703000006000	3000K/4000K	1.80Kg	
703000006100	3000K/4000K	2.30Kg	

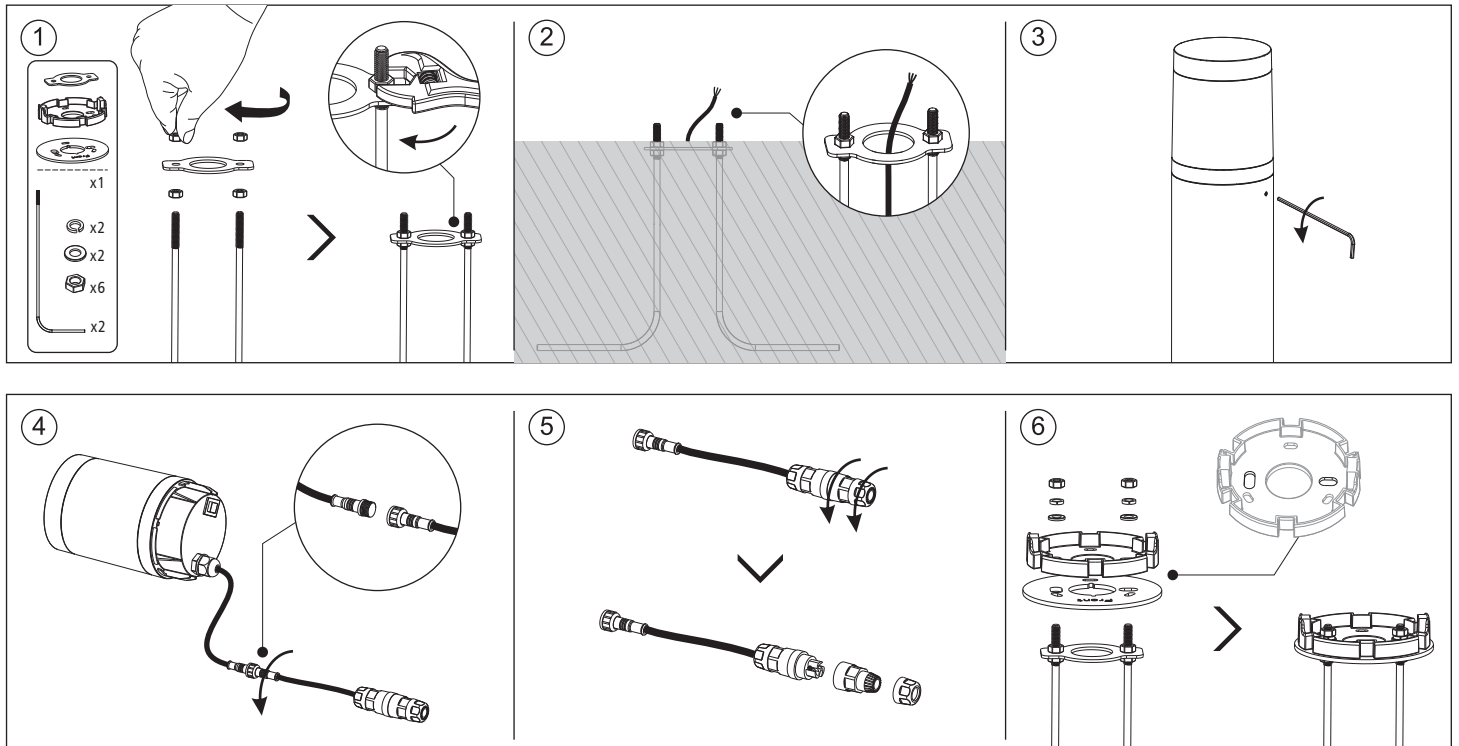
	Model Name	D (mm)	H (mm)	H ₁ (mm)	Rated Voltage (V~)	Frequency (Hz)	Current (A)	Power Factor	Rated Power(W)
	LEDBollard-Leo-P L400-8W-830/840-FR	100	400	125	200-240	50/60	0.05	0.85	8
LEDBollard-Leo-P L400-8W-830/840-CL	100	750	125	200-240	50/60	0.05	0.85	8	
LEDBollard-Leo-P L750-8W-830/840-FR	100	1000	125	200-240	50/60	0.05	0.85	8	
LEDBollard-Leo-P L750-8W-830/840-CL	100	1000	125	200-240	50/60	0.05	0.85	8	
LEDBollard-Leo-P L1000-8W-830/840-FR	100	1000	125	200-240	50/60	0.05	0.85	8	
LEDBollard-Leo-P L1000-8W-830/840-CL	100	1000	125	200-240	50/60	0.05	0.85	8	

Light Source

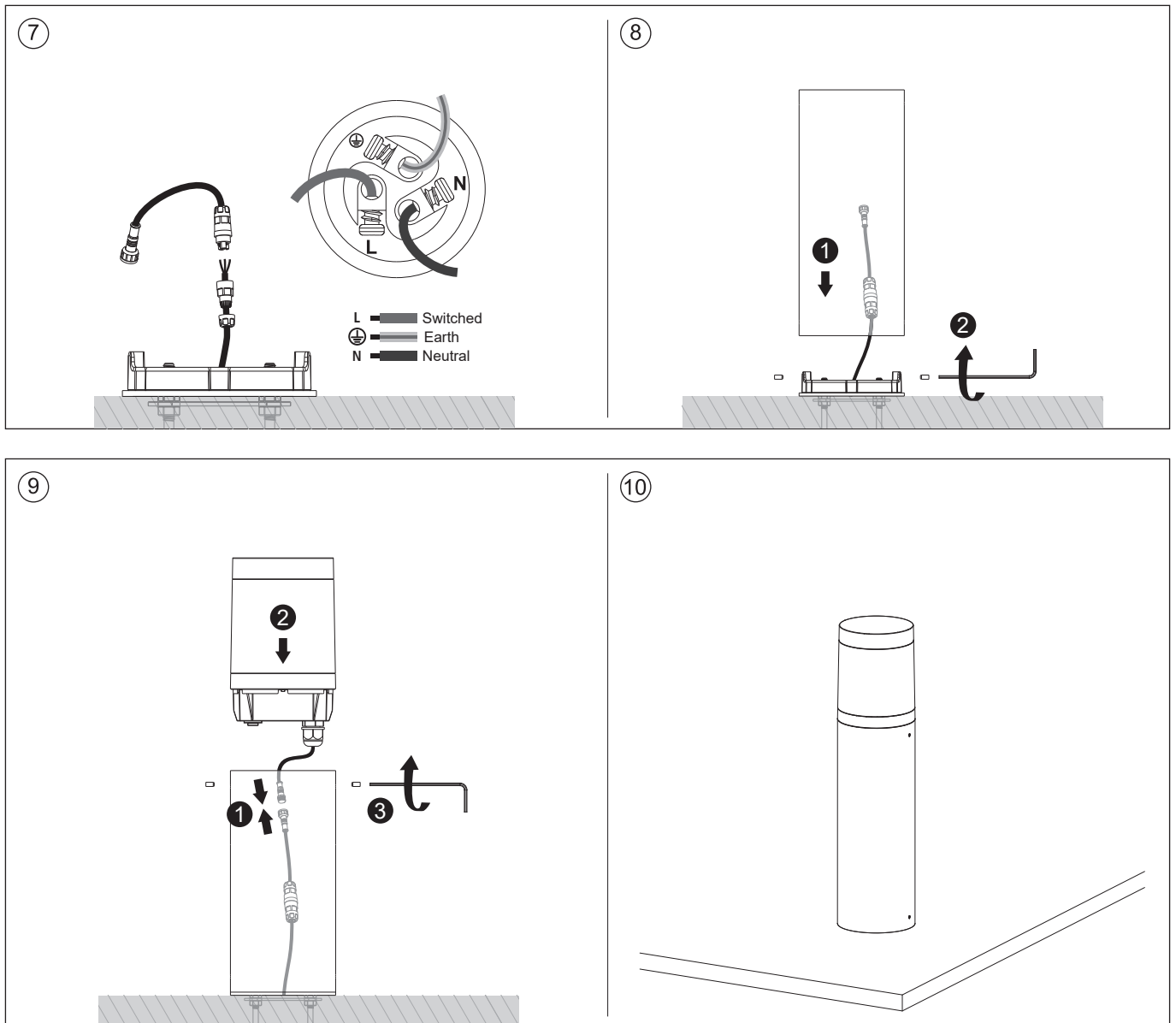
Product Code	Product Description	N	Light source code	QR Code	Energy Label
703000005600	LEDBollard-Leo-P L400-8W-830/840-FR	1	LS100000815-03		
703000005700	LEDBollard-Leo-P L750-8W-830/840-FR				
703000005800	LEDBollard-Leo-P L1000-8W-830/840-FR				
703000005900	LEDBollard-Leo-P L400-8W-830/840-CL	1	LS100000815		
703000006000	LEDBollard-Leo-P L750-8W-830/840-CL				
703000006100	LEDBollard-Leo-P L1000-8W-830/840-CL				

* This product contains a light source of energy efficiency class (D).

Installation



Installation



Caution: Any operation on LED module is forbidden while power-on.
 Zur Vermeidung von Risiken müssen defekte Leitungen ausschließlich vom Hersteller, Inverkehrbringer oder Fachmann ausgetauscht werden.
 Achtung: In Betrieb ist keine Arbeit am LED-Modul erlaubt.



For non-user replaceable light sources:
 The light source contained in this luminaire shall only be replaced by the manufacturer or his service agent or a similar qualified person. Otherwise the whole luminaire shall be replaced.
 Das Leuchtmittel dieser Leuchte ist nicht austauschbar. Wenn das Leuchtmittel das Ende seiner Lebensdauer erreicht hat, muss die gesamte Leuchte ersetzt werden.



For use in environments where normal non-conductive/conductive dust accumulation may be expected, not for use in environments with expected high/unusual dust accumulation.



Data subject to change
 Les données sont sujettes à modifications
 Änderungen vorbehalten

OPPLE Lighting Co., Ltd.
 Room 411, Building 1 No. 6111, Longdong Avenue,
 Pudong New District, Shanghai City 201201, P. R. China

Opplé Lighting B.V.
 Meerenakkerweg 1-07
 5652 AR Eindhoven
 The Netherlands
 service@opple.com
 www.opple.com