



TUBOLED FOOD

Typology

T8 LED tubes for special applications.

Features

Produced with calibrated spectra to improve visual perception of goods in different product sectors.

Material

White glass body, plastic caps.

Applications

The retail food, baked goods and hospitality industries.

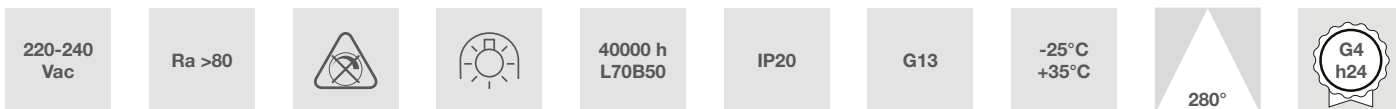
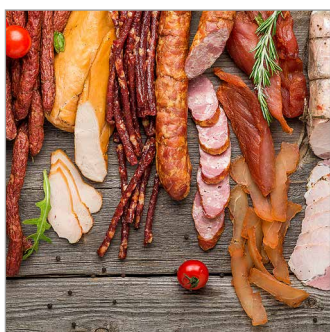
Usage information

Do not use with dimmer.

In case fluorescent tubes must be replaced, follow the simple assembly instructions indicated.

See instructions on the website.

Do not use in in-series installations.



Characteristic data

| | | | | | | | |
|-------|--------|------|------|--------------|--------|-------|-------------|
| Power | 10 W | Beam | 280° | Dimmable | No | Input | 220-240 Vac |
| Base | G13 | IP | 20 | Flux | 950 lm | PF | 0,88 |
| Tc | 3800 K | Ra | >80 | LED Warranty | G4h24 | | |

Dimensional characteristics



| | |
|---|--------|
| L | 602 mm |
| ø | 29 mm |

Lighting and photometric features

| | |
|-------------------------------------------|--------------------|
| Beam opening | 280° |
| Flux | 950 lm |
| CCT nominal colour temperature | 3800 K |
| Colour rendering index | >80 |
| Lifespan | 40000 h |
| LED lifespan | L70B50 |
| Trigger time | <0,2 s |
| Heating time up to 60% of full efficiency | Instant Full Light |
| Mercury | 0 mg |

Electrical characteristics

| | |
|-----------------------------|---------------|
| Rated power | 10 W |
| Input voltage | 220-240 Vac |
| Frequency | 50 Hz |
| Dimmable | No |
| Power factor (PF) | 0,88 |
| Input current | 0.04 A |
| Weighted energy consumption | 10 kWh/1000h |
| Number of cycles | 100000 |
| Operating temperature | -25°C / +35°C |
| Operating position | 360° |

Photometry

| | | | |
|--------|----------------|--------|-------|
| | - | | |
| | Ra80 | | |
| | Fixture Power | 10W | |
| | Source Flux | 950lm | |
| | Fixture Flux | 950lm | |
| | Efficacy | 95lm/W | |
| 927493 | Imax=172cd/klm | Imax | 163cd |

EulumDat file on the site

LED Warranty

| | |
|-------|---------------------------------------------------------------------------------------------------------------------------------------------------------------|
| G4h24 | Full Guarantee 4 years (24h/24h) Without limitations on the duration of use for the first year, provided the observance of the installation conditions. |
|-------|---------------------------------------------------------------------------------------------------------------------------------------------------------------|

European Directives

2009/125/EC * Ecodesign
2011/65/EU * RoHS
2012/19/EU * RAEE
2014/30/EU * EMC
2014/35/EU * LVD
2015/863 * Amending RoHS
2017/1369 * Regulation for Energy Labelling
2019/2015 * Regulation for Energy Labelling
2019/2020 * Regulation for Ecodesign
2021/340 * Amending Reg. Energy Labelling
2021/341 * Amending Reg. Ecodesign

Product standards

CEI EN 55015:2020 (+A11:2020)
CEI EN 60968:2016
CEI EN 61000-3-2:2019 (+A1:2021)
CEI EN 61000-3-3:2014 (+EC1:2014/+EC2:2016/+A1:2021/+A2:2022)
CEI EN 61547:2010
CEI EN 62031:2021 (+A11:2022)
CEI EN 62471:2010
IEC/TR 62471-2:2009
CEI EN 62560:2013 (+A1:2017/+A11:2020)
CEI EN 62776:2015
CEI 34-141:2014

Logistics data

| | |
|--------------------------------|---------------|
| Barcode single item | 8011905927493 |
| Number of pieces multiple pack | 25 |
| Barcode multiple pack | 8011905932558 |