

## TUBOLED FOOD

### Typology

T8 LED tubes for special applications.

### Features

Produced with calibrated spectra to improve visual perception of goods in different product sectors.

### Material

White glass body, plastic caps.

### Applications

The retail food, baked goods and hospitality industries.

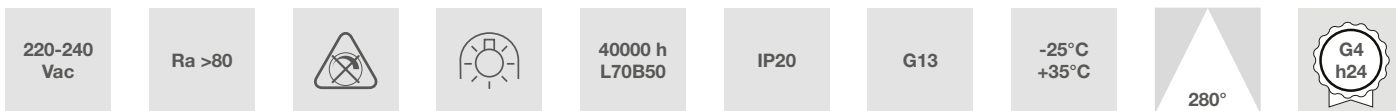
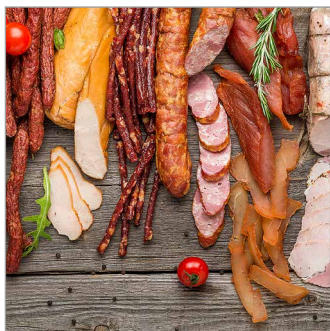
### Usage information

Do not use with dimmer.

In case fluorescent tubes must be replaced, follow the simple assembly instructions indicated.

See instructions on the website.

Do not use in in-series installations.



### Characteristic data

Power	24 W	Beam	280°	Dimmable	No	Input	220-240 Vac
Base	G13	IP	20	Flux	2150 lm	PF	0,92
Tc	3800 K	Ra	>80	LED Warranty	G4h24		

## Dimensional characteristics



L	1513 mm
ø	29 mm

## Lighting and photometric features

Beam opening	280°
Flux	2150 lm
CCT nominal colour temperature	3800 K
Colour rendering index	>80
Lifespan	40000 h
LED lifespan	L70B50
Trigger time	<0,2 s
Heating time up to 60% of full efficiency	Instant Full Light
Mercury	0 mg

## Electrical characteristics

Rated power	24 W
Input voltage	220-240 Vac
Frequency	50 Hz
Dimmable	No
Power factor (PF)	0,92
Input current	0.11 A
Weighted energy consumption	24 kWh/1000h
Number of cycles	100000
Operating temperature	-25°C / +35°C
Operating position	360°

## Photometry

	-	
	Ra80	
	Fixture Power	24W
	Source Flux	2150lm
	Fixture Flux	2150lm
	Efficacy	90lm/W
927554	Imax=172cd/klm	Imax 369cd

EulumDat file on the site

## LED Warranty

G4h24	Full Guarantee 4 years (24h/24h) Without limitations on the duration of use for the first year, provided the observance of the installation conditions.
-------	---

## European Directives

2009/125/EC \* Ecodesign  
2011/65/EU \* RoHS  
2012/19/EU \* RAEE  
2014/30/EU \* EMC  
2014/35/EU \* LVD  
2015/863 \* Amending RoHS  
2017/1369 \* Regulation for Energy Labelling  
2019/2015 \* Regulation for Energy Labelling  
2019/2020 \* Regulation for Ecodesign  
2021/340 \* Amending Reg. Energy Labelling  
2021/341 \* Amending Reg. Ecodesign

## Product standards

CEI EN 55015:2020 (+A11:2020)  
CEI EN 60968:2016  
CEI EN 61000-3-2:2019 (+A1:2021)  
CEI EN 61000-3-3:2014 (+EC1:2014/+EC2:2016/+A1:2021/+A2:2022)  
CEI EN 61547:2010  
CEI EN 62031:2021 (+A11:2022)  
CEI EN 62471:2010  
IEC/TR 62471-2:2009  
CEI EN 62560:2013 (+A1:2017/+A11:2020)  
CEI EN 62776:2015  
CEI 34-141:2014

## Logistics data

Barcode single item	8011905927554
Number of pieces multiple pack	25
Barcode multiple pack	8011905932619