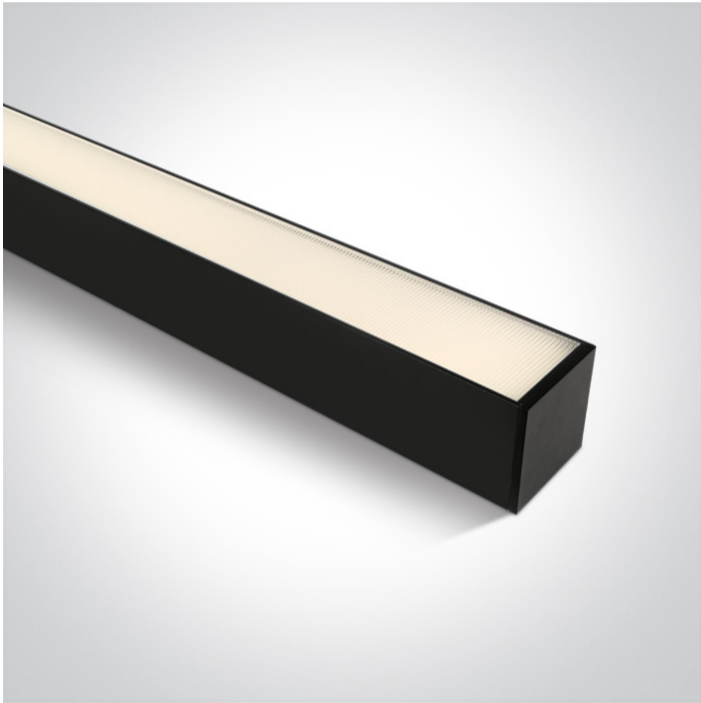


New 2025 Edition 2>Office & Kitchen

38161A/B/V



CCT and Power variable 50W UGR19 Linear system with diffuser for surface or suspended installation, ideal for offices.

Complete with power variable driver.

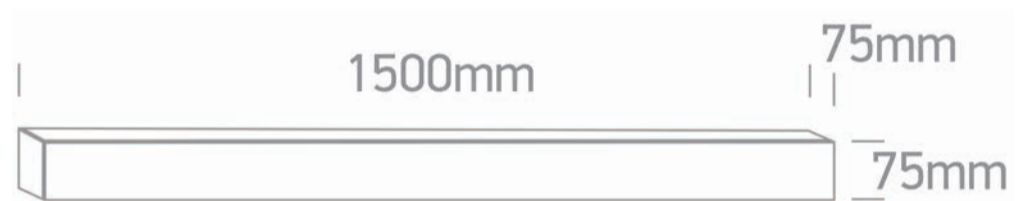
Complies with standard EN60598-1 and any other specific standards



Downloads



Dimensions



Gallery



Accessories





050170

Physical Specification

Item Group	New 2025 Edition 2
Family	Office & Kitchen
Order Code	38161A/B/V
Colour	Black
Material	Aluminium
Shape	Rectangular
Length	1500mm
Width	75mm
Height	75mm
Surface Ceiling	Yes
Suspended Ceiling	Yes
Indoor	Yes
Adjustable	No

Electrical Characteristics

Gear	Built In
Fitting + Driver	
Input Voltage	220-240V
50 Hz	Yes
60 Hz	Yes
Safety Class	
Power(Watts)	30W-40W-50W
IP Rating	IP20
Light Source	LED built in
Dimmable	No
Cable Length	300cm
F Mark	


Fitting

Input Type	Constant Current
IP Rating	IP20
Light Source	LED built in
LED Type	SMD

Gear

Gear Type	Led Driver
Input Voltage	220-240V
IP Rating	IP20
Dimmable	No

Illumination Data

Colour Temperature	3000K-4000K-5000K
Lumen Output	4250lm (50W)
Light Efficiency	85lm/W
CRI	90
Illumination Diagram	
UGR	19

Packing Info

Pcs/Carton	9
------------	---

Certification & Warranty

Warranty

3 Years

Weee Directive

Yes

switch to
one light!

one
LIGHT

